

NOTE:
1. SPACING OF EXPANSION JOINTS NOT TO EXCEED 600'

NOTE:
DETAIL SUBJECT TO CHANGE PER DIRECTION OF CITY OF LEWISVILLE ENGINEERING DIVISION.



Standard Details
PLAN OF PAVEMENT JOINTS

Revisions:

No.	Description	Date

Engineering Department

Dated: 8-13-07

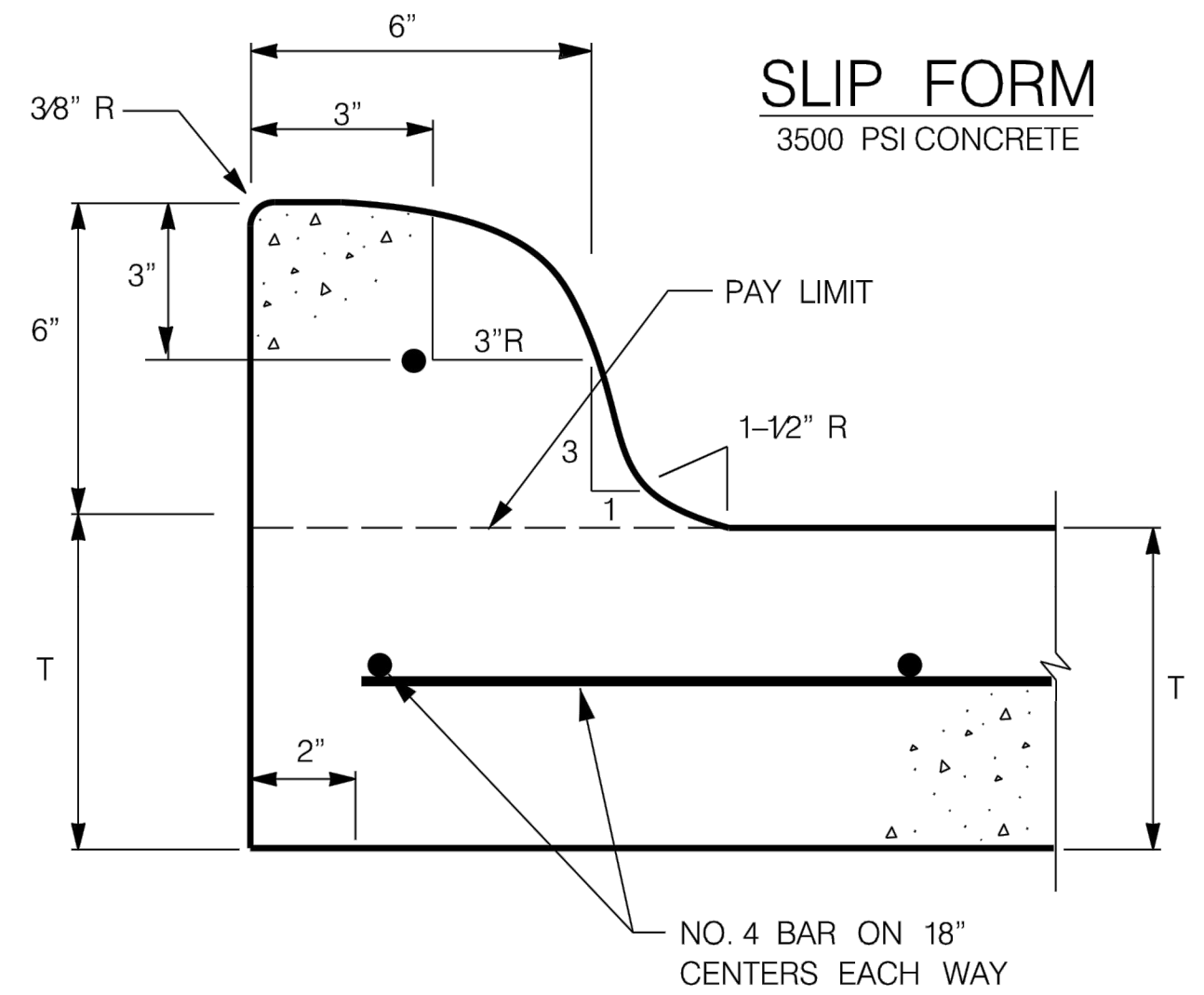
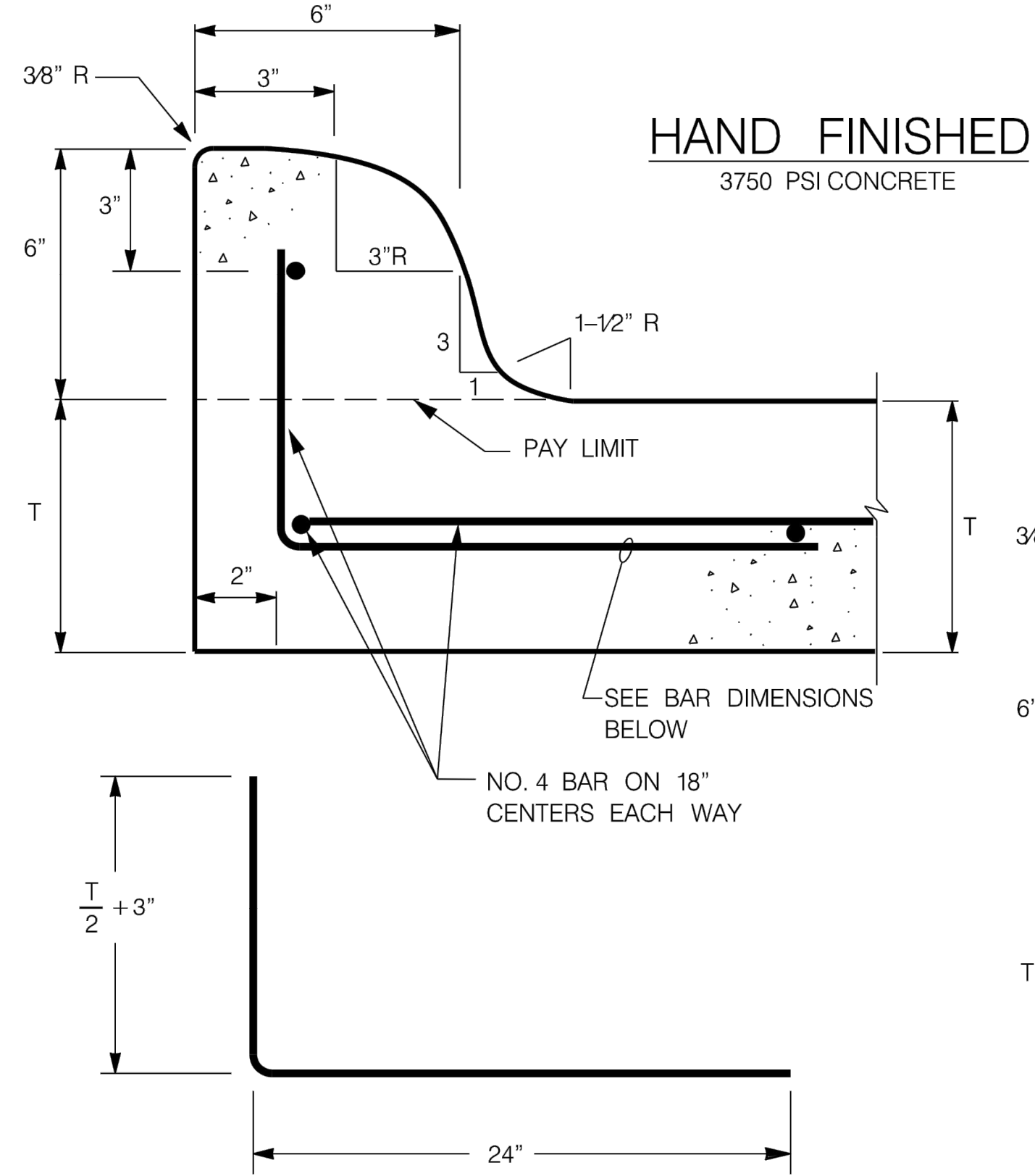
Dated: 10-21-19

Office No. 972-219-3490

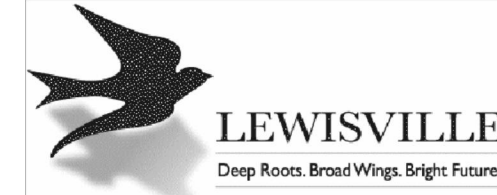
Sheet:

2.7

www.cityoflewisville.com



NOTE:
DETAIL SUBJECT TO CHANGE PER DIRECTION OF CITY OF LEWISVILLE ENGINEERING DIVISION.



Standard Details
6" INTEGRAL CURB

Revisions:

No.	Description	Date

Engineering Department

Dated: 8-13-07

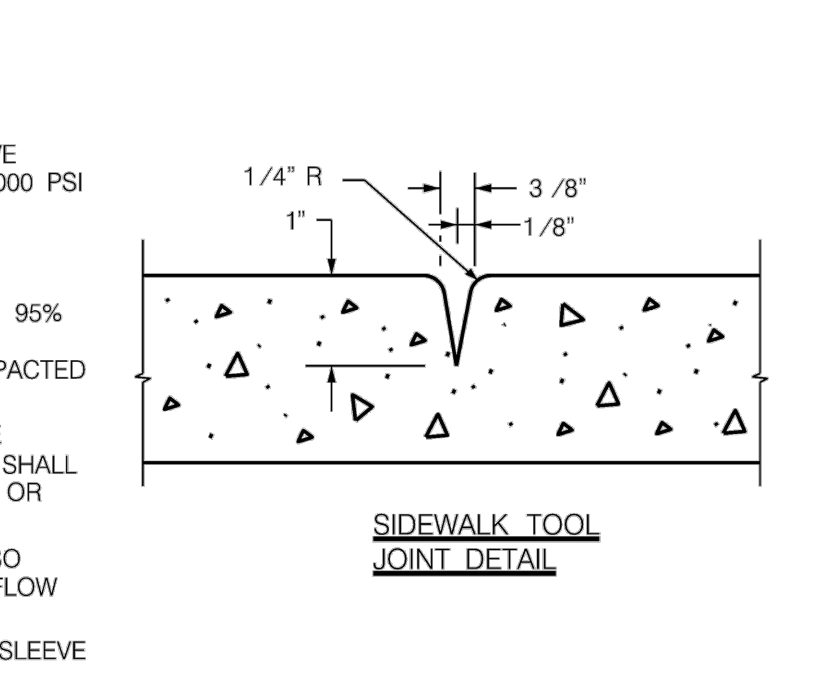
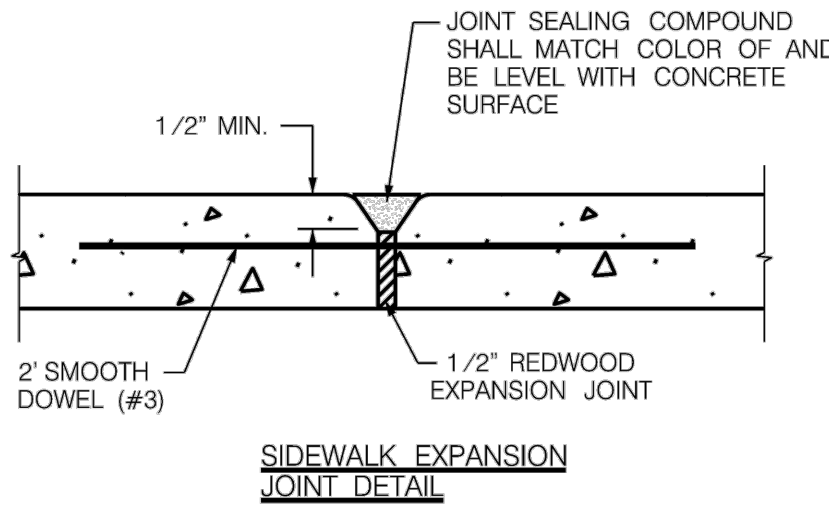
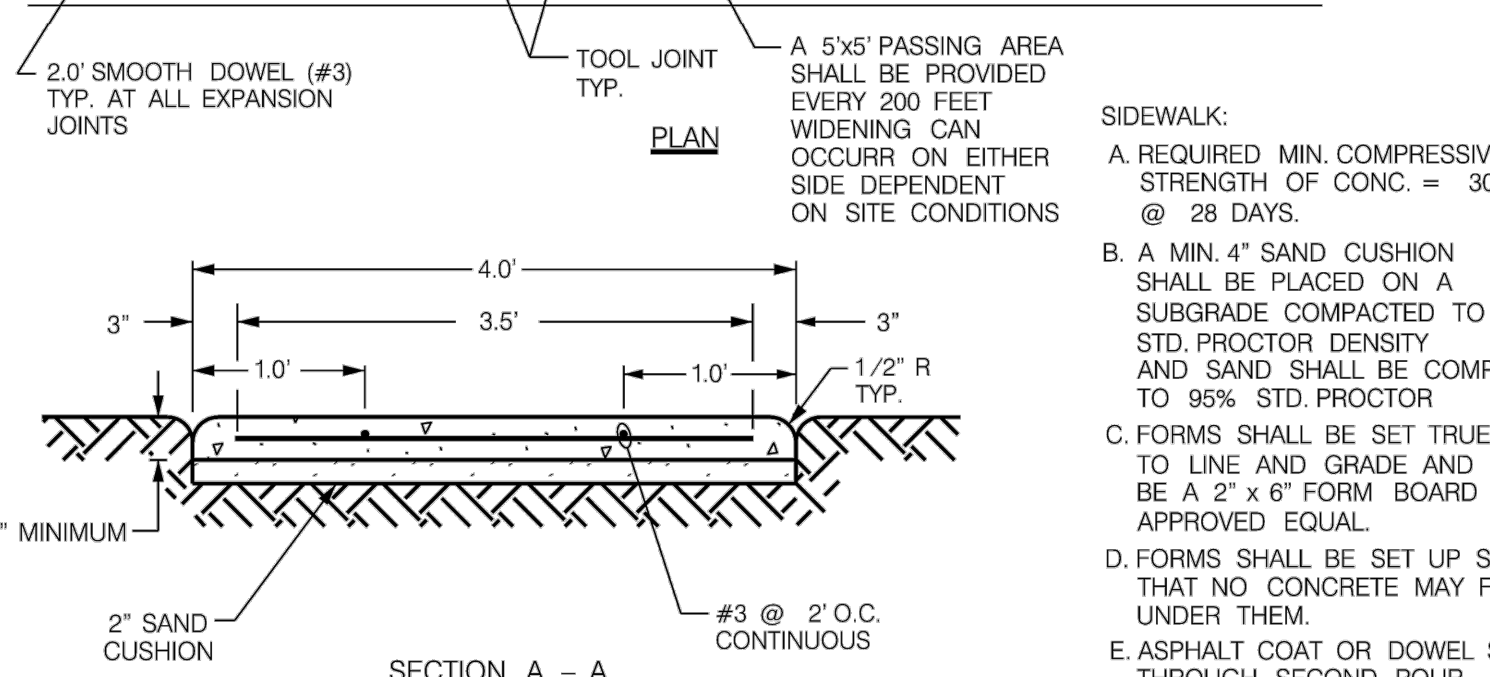
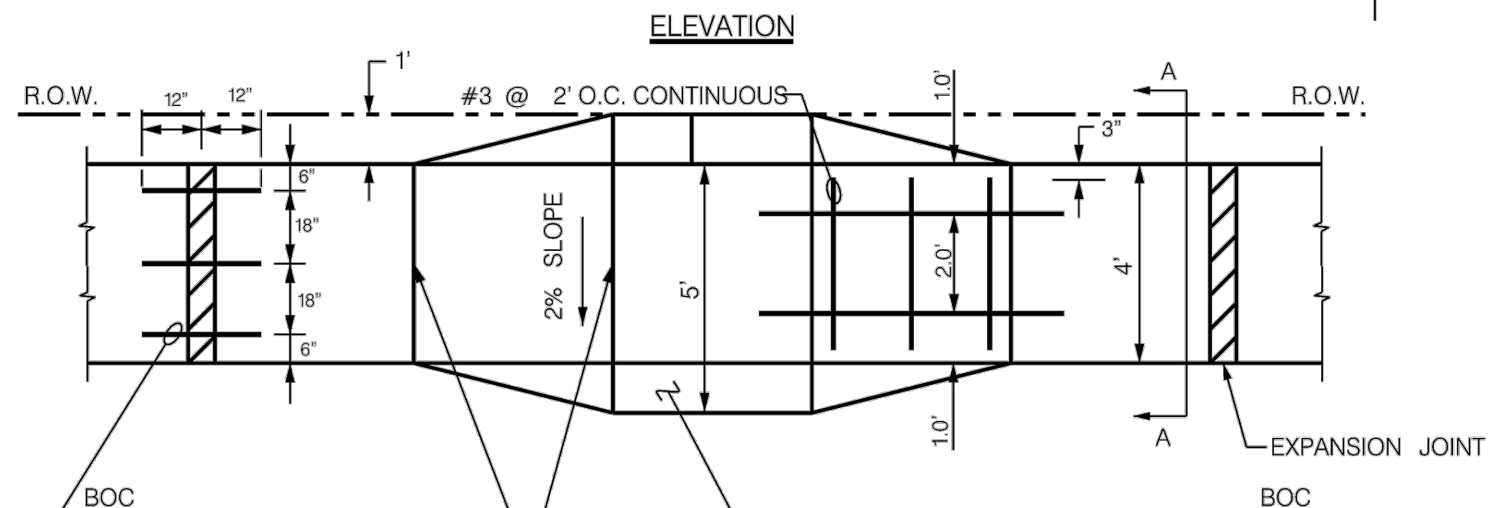
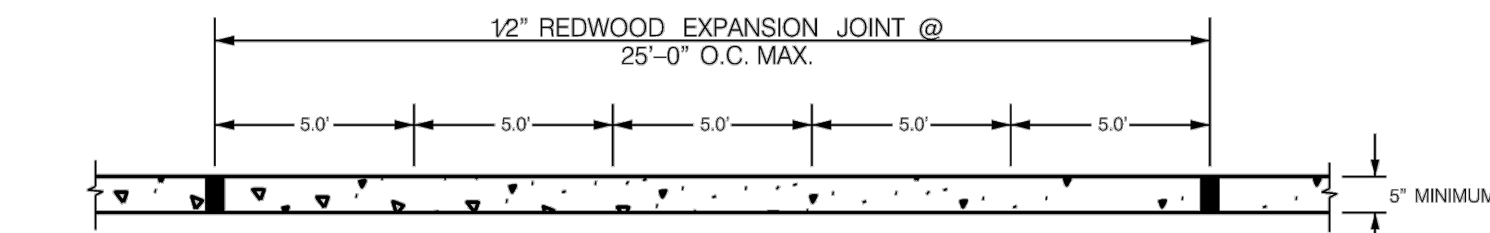
Dated: 10-21-19

Office No. 972-219-3490

Sheet:

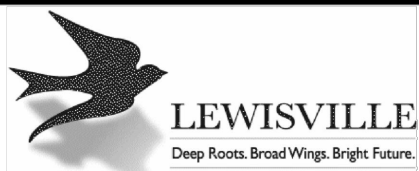
2.8

www.cityoflewisville.com



- SIDEWALK:
- A. REQUIRED MIN. COMPRESSIVE STRENGTH OF CONC. = 3000 PSI @ 28 DAYS.
 - B. A MIN. 4" SAND CUSHION SHALL BE PLACED ON A SUBGRADE COMPACTED TO 95% STD. PROCTOR DENSITY AND SAND SHALL BE COMPACTED TO 95% STD. PROCTOR
 - C. FORMS SHALL BE SET TRUE TO LINE AND GRADE AND SHALL BE A 2" x 6" FORM BOARD OR APPROVED EQUAL.
 - D. FORMS SHALL BE SET UP SO THAT NO CONCRETE MAY FLOW UNDER THEM.
 - E. ASPHALT COAT OR DOWEL SLEEVE THROUGH SECOND POUR.
 - F. CONTRACTOR MUST SAWCUT EXISTING SIDEWALK AT EXISTING TOOL JOINT

NOTE:
DETAIL SUBJECT TO CHANGE PER DIRECTION OF CITY OF LEWISVILLE ENGINEERING DIVISION.



Standard Details
4.0' SIDEWALK DETAILS

Revisions:

No.	Description	Date

Engineering Department

Dated: 10-24-11

Dated: 8-20-19

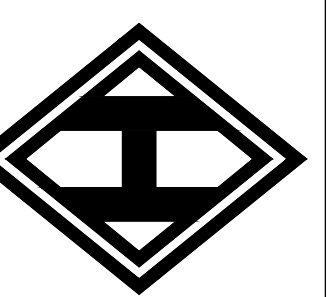
Office No. 972-219-3490

Sheet:

4.1

www.cityoflewisville.com

HOMMEYER
ENGINEERING, INC.
TBP# FIRM REGISTRATION NO. F-8440
P.O. BOX 294527 • LEWISVILLE, TEXAS • 75029
972-906-9985 PHONE • 972-906-9987 FAX
WWW.HEI.US.COM

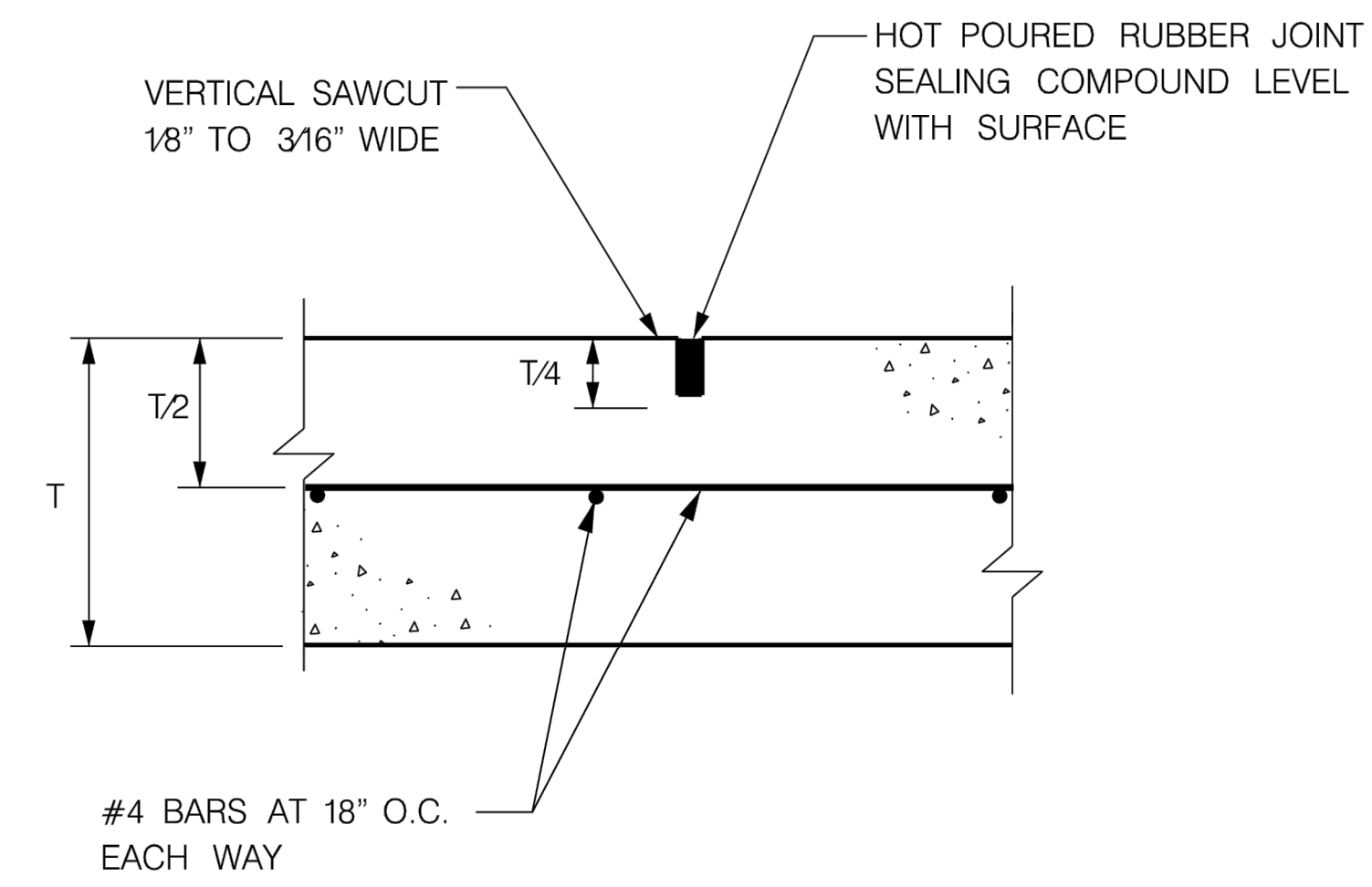
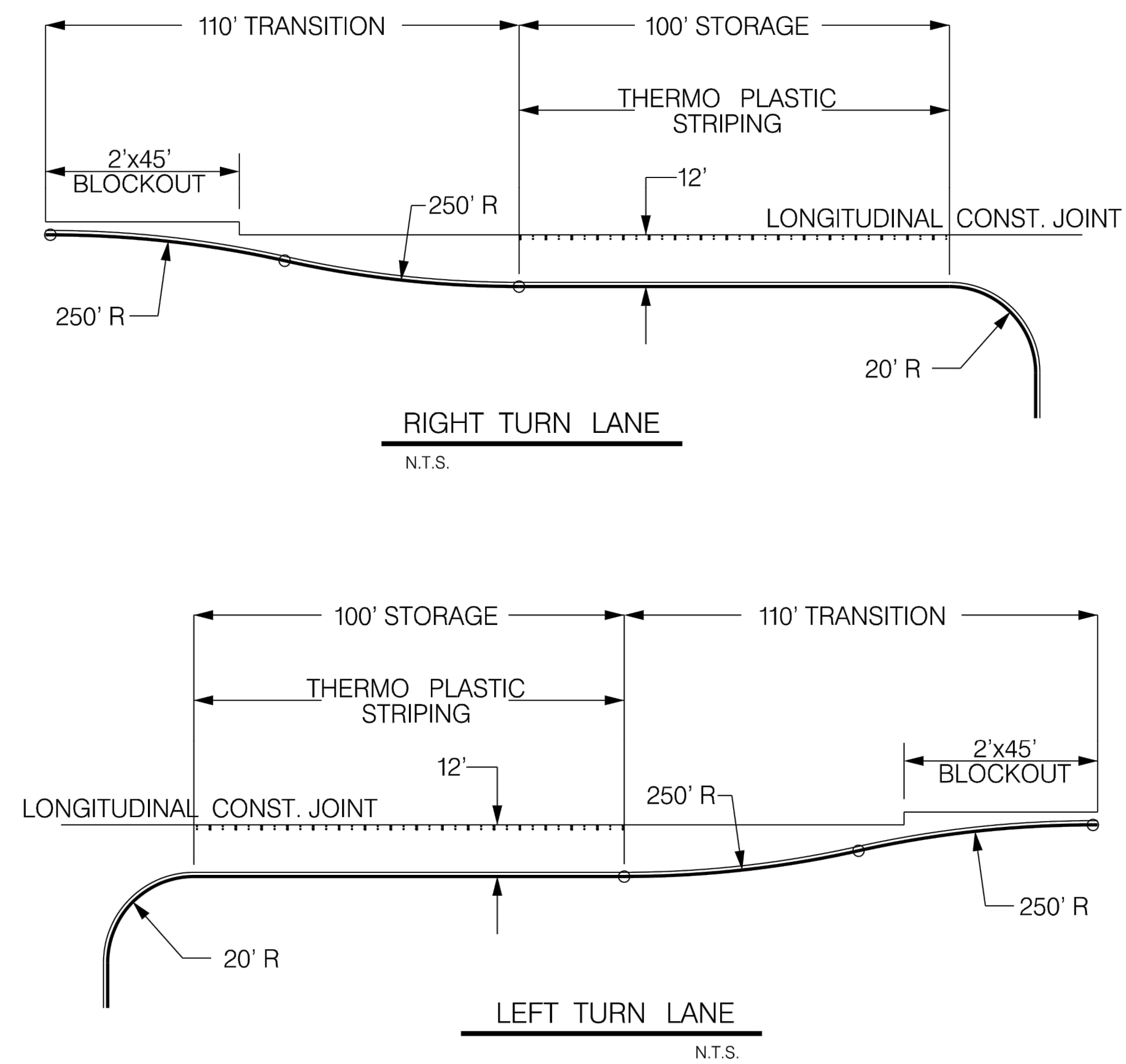


BURNS OFFICE
121 RAILROAD ADDITION
LOT 2, BLOCK A
6.58 ACRES
CITY OF LEWISVILLE
DENTON COUNTY, TEXAS

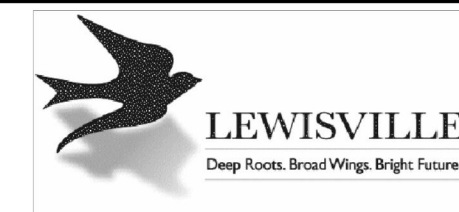
PAVING DETAILS

DRAWN: DCU
DATE: 10/06/2020
HEI #: 20-0803
SHEET NO:
C11.1

PRELIMINARY PLANS
THIS DOCUMENT IS FOR INTERIM REVIEW AND IS NOT INTENDED FOR CONSTRUCTION, BIDDING OR PERMIT PURPOSES.
STEVEN R. HOMMEYER, PE # 86942
DATE: 09/23/2021



NOTE:
DETAIL SUBJECT TO CHANGE PER DIRECTION
OF CITY OF LEWISVILLE ENGINEERING DIVISION.



Standard Details

SAWED TRANSVERSE AND
LONGITUDINAL DUMMY JOINT

Revisions:

No.	Description	Date

Engineering Department
Office No. 972-219-3490
www.cityoflewisville.com

Dated: 8-13-07

Dated: 11-6-19

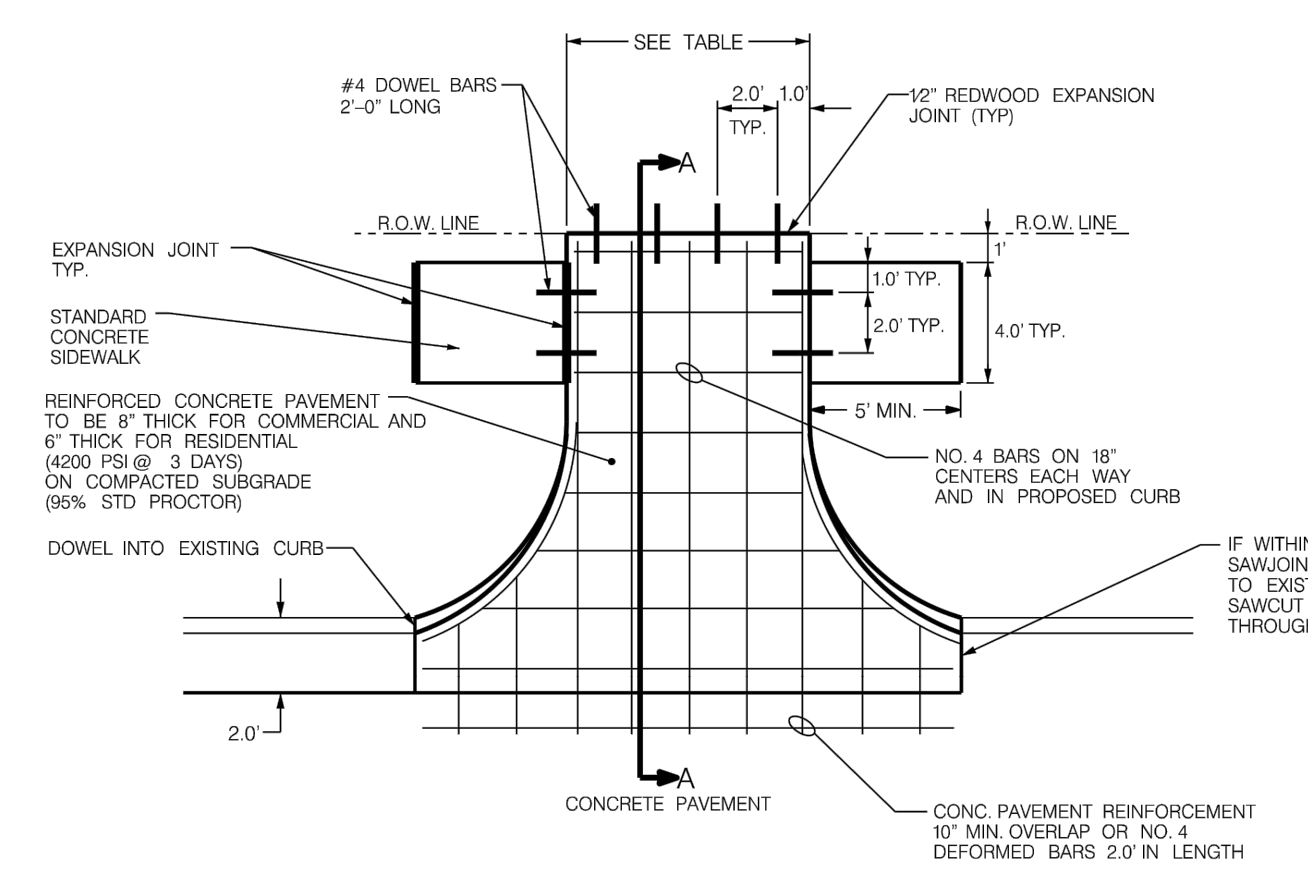
Sheet: 2.3

Engineering Department
Office No. 972-219-3490
www.cityoflewisville.com

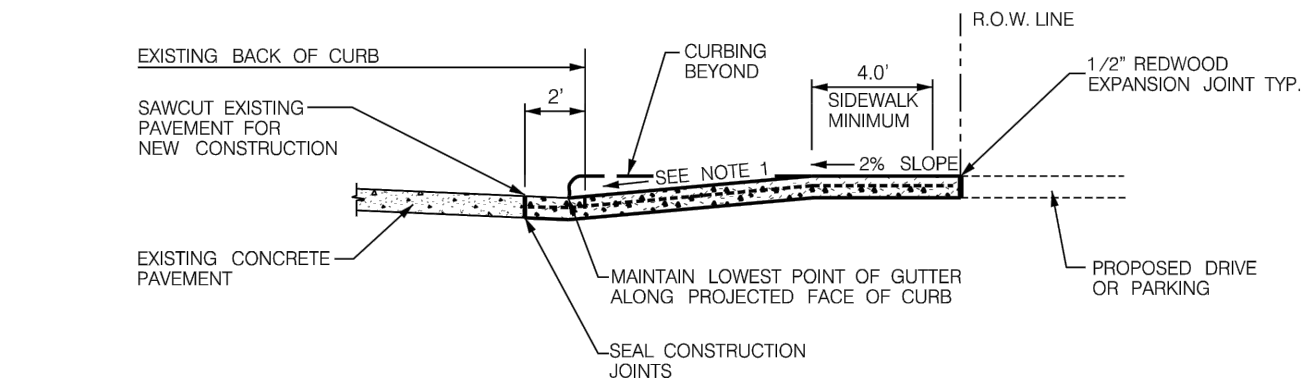
Dated: 8-13-07

Dated: 10-23-19

Sheet: 2.16



DRIVEWAY WIDTHS		
TYPE	WIDTH	RADIUS
RESIDENTIAL	12' MINIMUM	5'
	24' MAXIMUM	5'
COMMERCIAL	REFER TO APPROVED ENGINEERING SITE PLAN.	



NOTE:
1. MAXIMUM SLOPE IS 10% FOR RESIDENTIAL AND 8% FOR COMMERCIAL
2. DRIVEWAY TO BE CONSTRUCTED WITHIN 5 DAYS OF SAW CUTTING PAVEMENT

NOTE:
DETAIL SUBJECT TO CHANGE PER DIRECTION
OF CITY OF LEWISVILLE ENGINEERING DIVISION.



Standard Details

Driveway Paving Detail
(Concrete Drive with Concrete Pavement)

Revisions:

No.	Description	Date

Engineering Department
Office No. 972-219-3490
www.cityoflewisville.com

Dated: 4-27-10

Dated: July 2019

Sheet: 3.4

PRELIMINARY PLANS
THIS DOCUMENT IS FOR INTERIM
REVIEW AND IS NOT INTENDED FOR
CONSTRUCTION, BIDDING OR PERMIT
PURPOSES.
STEVEN R. HOMEYER, PE # 86942
DATE: 09/23/2021

BURNS OFFICE
121 RAILROAD ADDITION
LOT 2, BLOCK A
6.58 ACRES
CITY OF LEWISVILLE
DENTON COUNTY, TEXAS

PAVING DETAILS

DRAWN: DCU

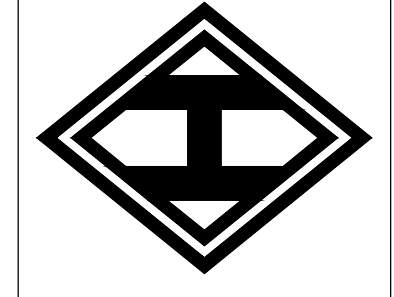
DATE: 10/06/2020

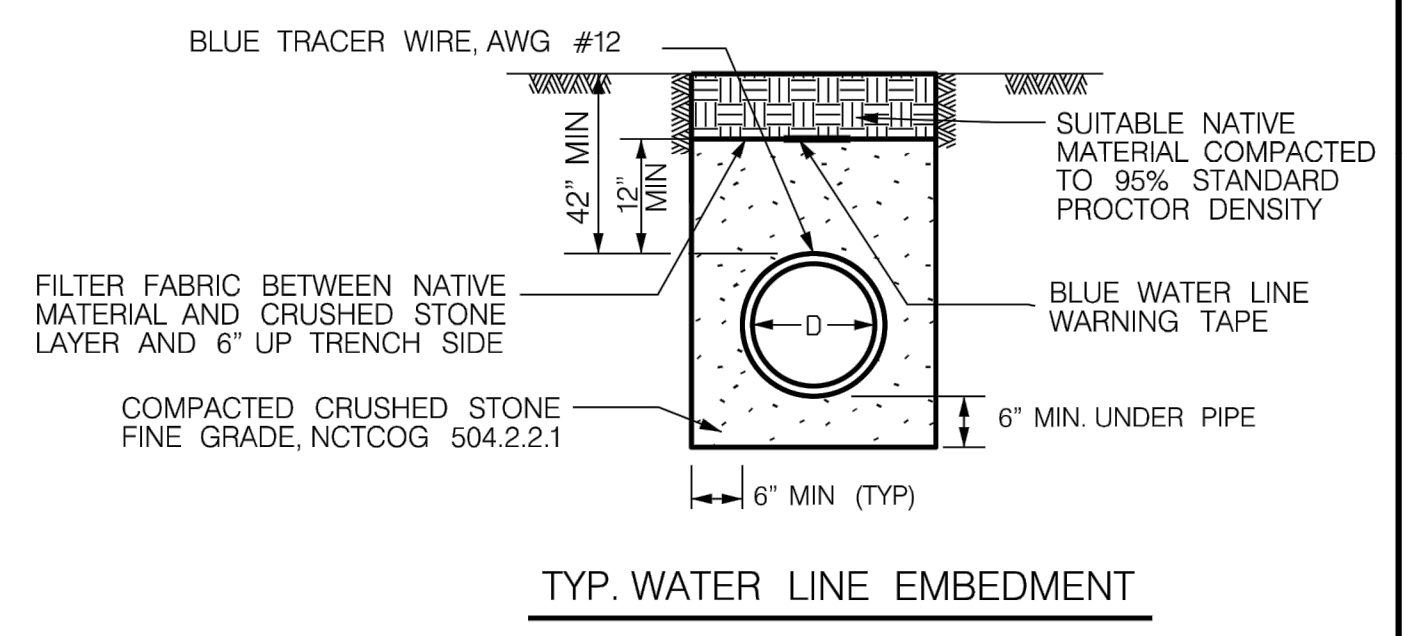
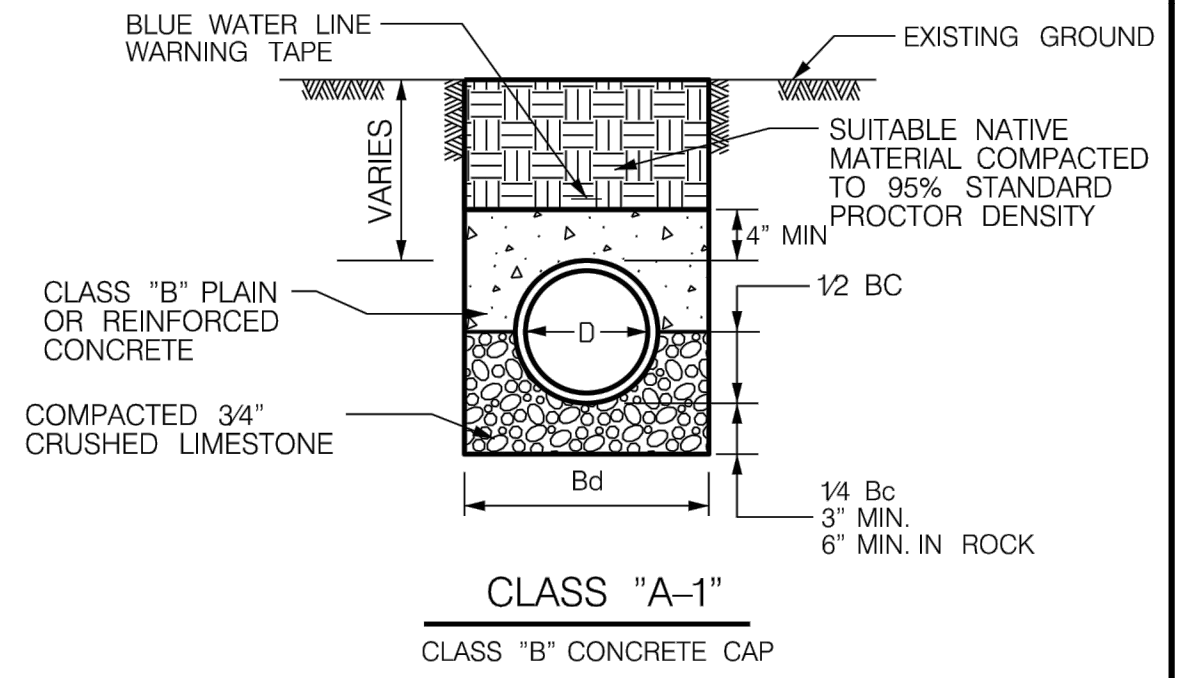
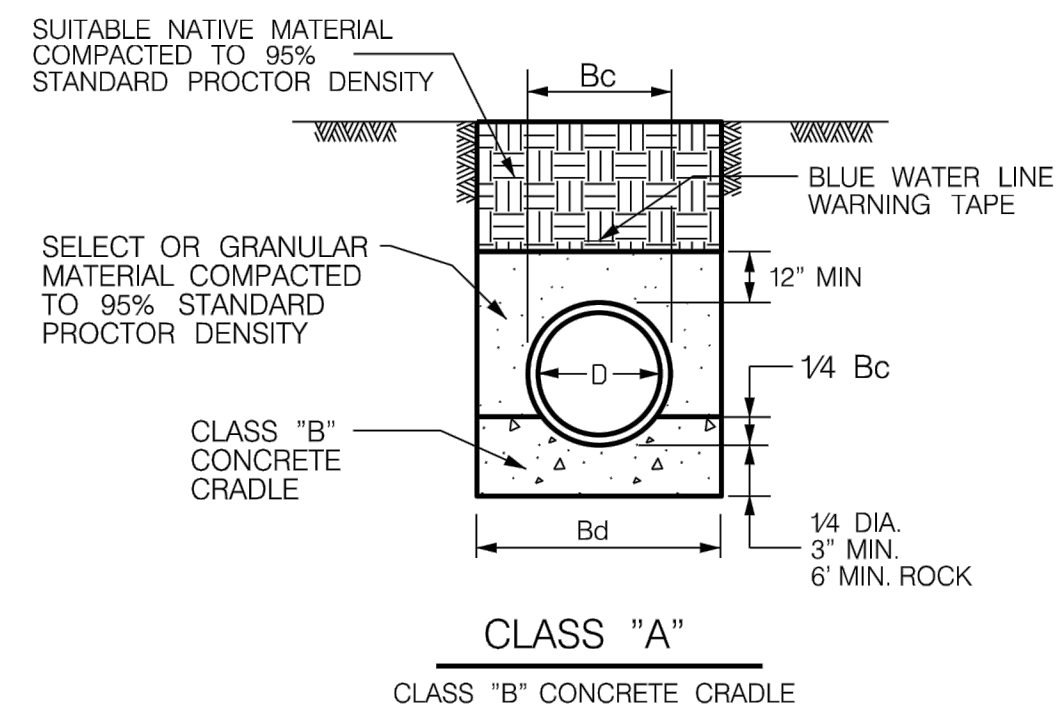
HEI #: 20-0803

SHEET NO:

C11.2

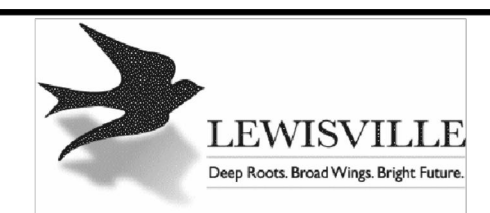
HOMEYER
ENGINEERING, INC.
ENGINE FIRM REGISTRATION NO. F-8440
T.B.P.E. REGISTRATION NO. TEXAS # 75029
P.O. BOX 294527 • LEWISVILLE, TEXAS • 75029
972-906-9985 PHONE • 972-906-9987 FAX
WWW.HEI.US.COM





- NOTES:
1. Bc = OUTSIDE DIAMETER OF PIPE
 2. Bd - TRENCH WIDTH
 3. BLUE TRACER WIRE AWG #12 SHALL BE PLACED OVER ALL WATER MAINS AND ROUTED THROUGH VALVE STACKS.
 4. PLACE BLUE POTABLE WATER MARKING TAPE 24-INCHES ABOVE ALL CITY WATER MAINS.
 5. ALL UTILITY CROSSINGS MUST MEET TCEQ REQUIREMENTS.
 6. CLASS "A" AND "A-1" EMBEDMENT MAY BE USED WHEN APPROVED BY THE CITY FOR EMBEDMENT OF A WATER PIPE WHICH PASSES BENEATH A STORM DRAIN PIPE.

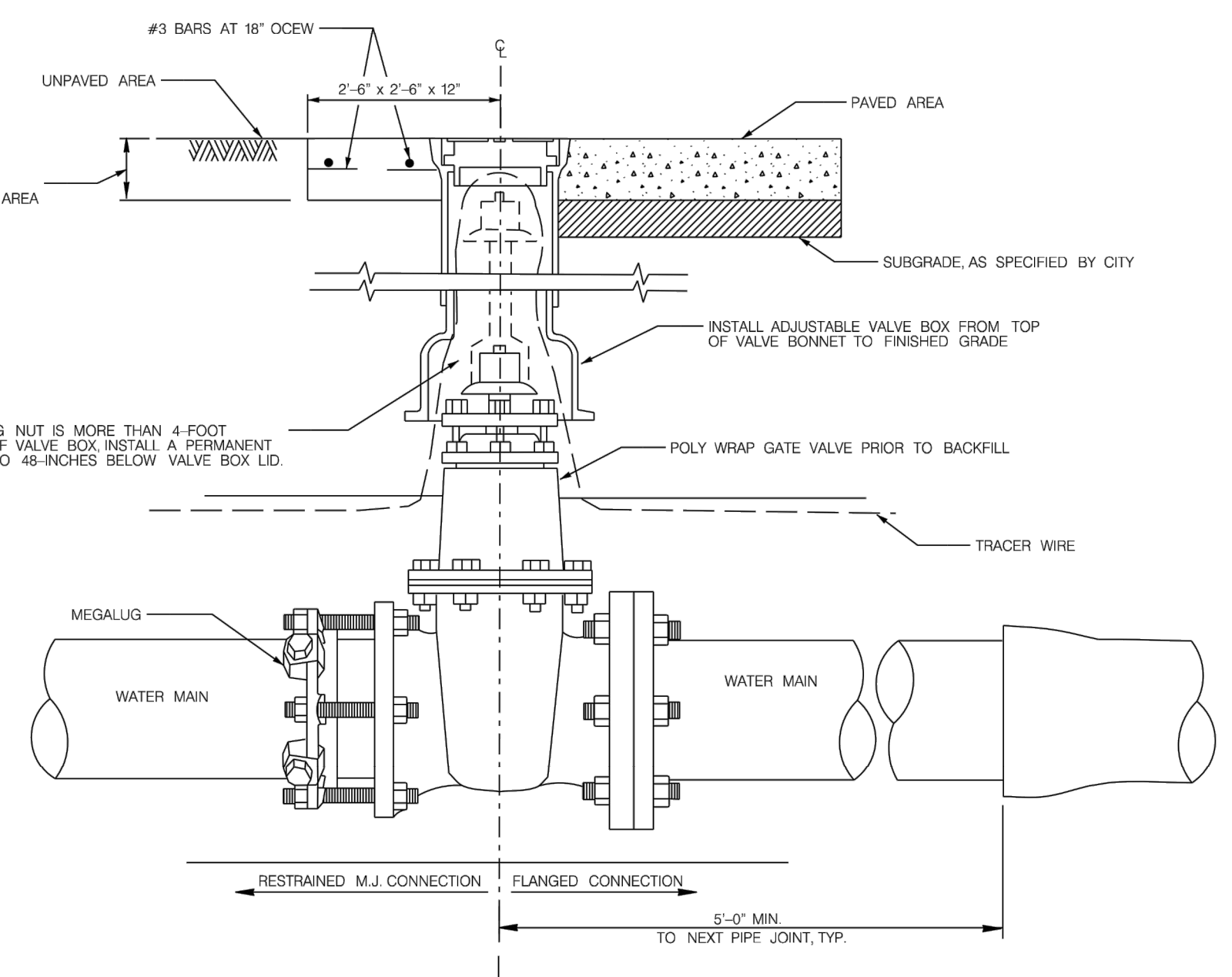
NOTE:
DETAIL SUBJECT TO CHANGE PER DIRECTION OF CITY OF LEWISVILLE ENGINEERING DIVISION.



Standard Details
Water Main Embedment
Class A, A-1, and Typical

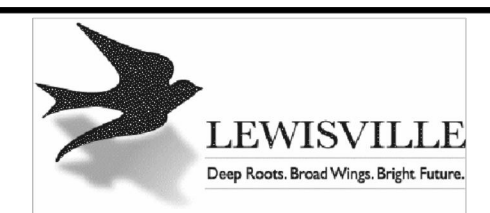
Revisions:			Engineering Department	Dated: 10-27-20
No.	Description	Date		

Office No. 972-219-3490 Sheet: 8.1
www.cityoflewisville.com



- NOTE:
1. RESILIENT SEAT VALVES 4" THRU 12" IN SIZE SHALL BE IN ACCORDANCE WITH AWWA STANDARD C-509.
 2. CUT A "Y" SHAPED SYMBOL ON THE NEAREST CURB FACE WITH THE POINT OF THE "Y" SYMBOL POINTING TOWARDS THE VALVE LOCATION.
 3. PLACE BLUE TRACER WIRE, AWG #12 OVER ALL WATER MAINS AND ROUTED THROUGH VALVE STACKS.

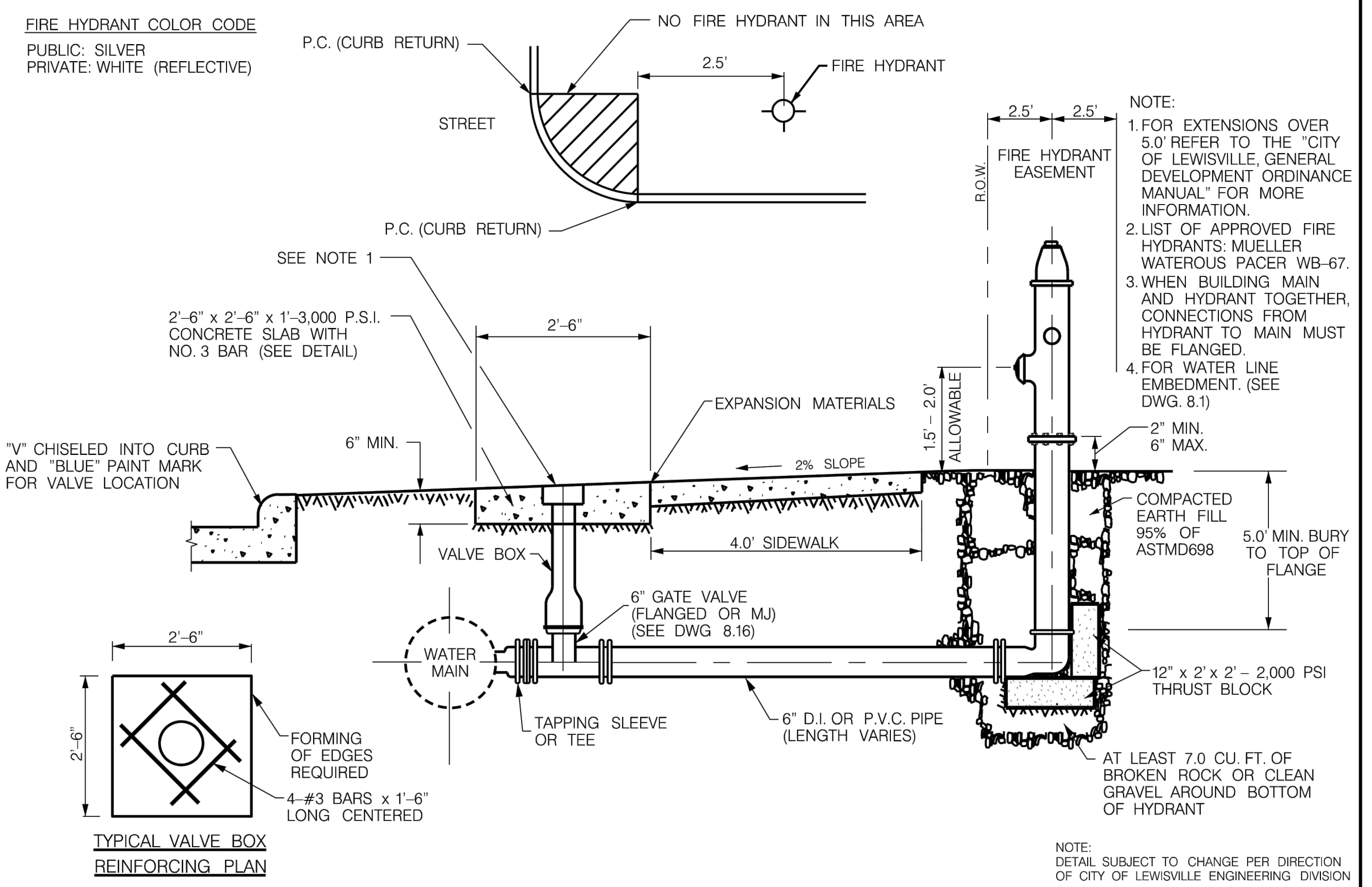
NOTE:
DETAIL SUBJECT TO CHANGE PER DIRECTION OF CITY OF LEWISVILLE ENGINEERING DIVISION.



Standard Details
Gate Valve Installation
12-inch and Smaller Profile

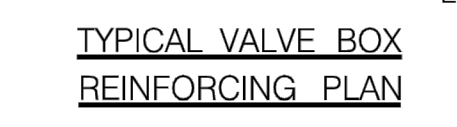
Revisions:			Engineering Department	Dated: 11-1-13
No.	Description	Date		

Office No. 972-219-3490 Sheet: 8.9
www.cityoflewisville.com



- NOTE:
1. FOR EXTENSIONS OVER 5.0' REFER TO THE "CITY OF LEWISVILLE, GENERAL DEVELOPMENT ORDINANCE MANUAL" FOR MORE INFORMATION.
 2. LIST OF APPROVED FIRE HYDRANTS: MUELLER WATEROUS PACER WB-67.
 3. WHEN BUILDING MAIN AND HYDRANT TOGETHER, CONNECTIONS FROM HYDRANT TO MAIN MUST BE FLANGED.
 4. FOR WATER LINE EMBEDMENT. (SEE DWG. 8.1)

NOTE:
DETAIL SUBJECT TO CHANGE PER DIRECTION OF CITY OF LEWISVILLE ENGINEERING DIVISION.



Standard Details
Typical Installation
Fire Hydrant Assembly

Revisions:			Engineering Department	Dated: 08-17-15
No.	Description	Date		

Office No. 972-219-3490 Sheet: 8.18
www.cityoflewisville.com

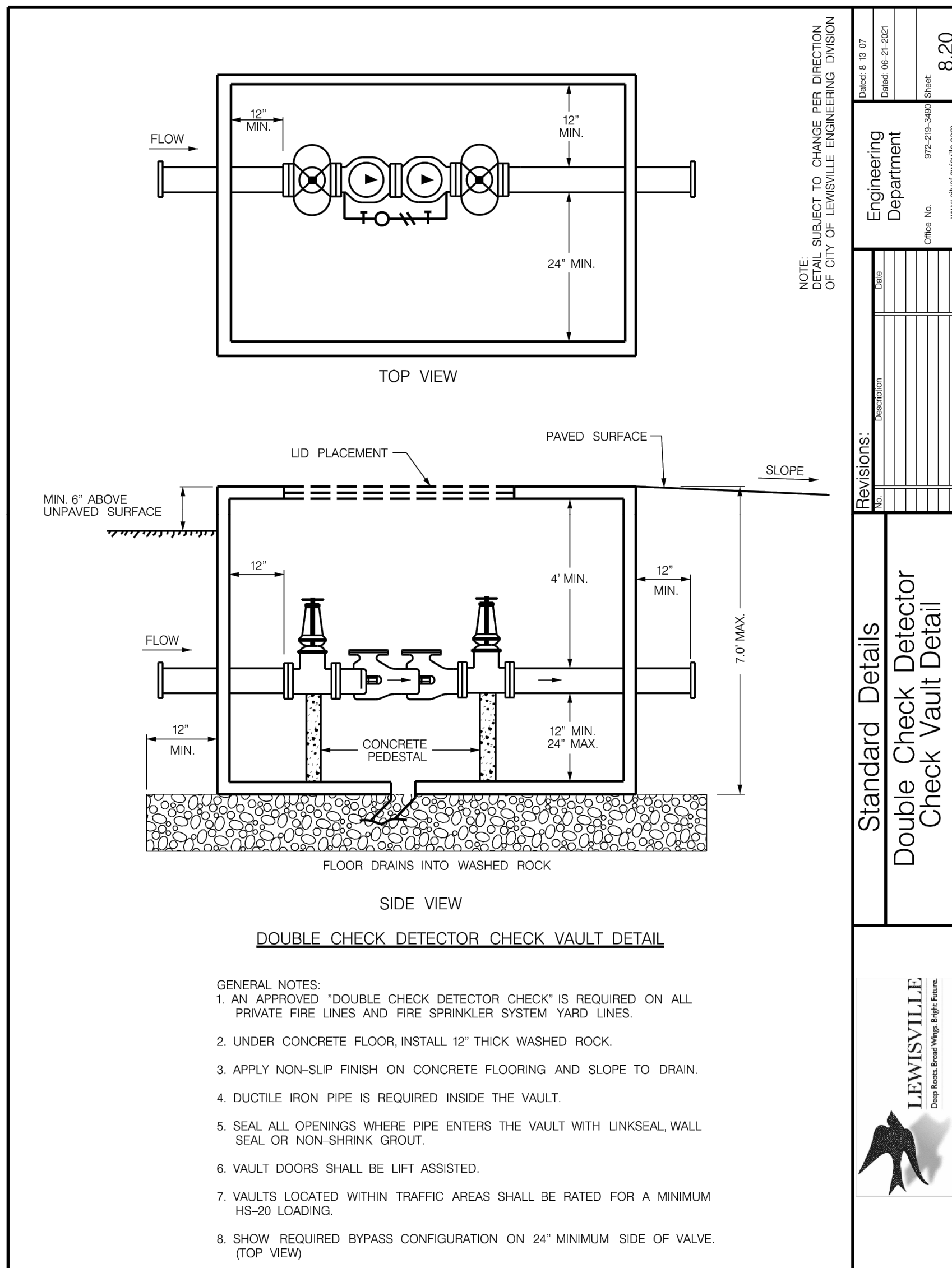
PRELIMINARY PLANS
THIS DOCUMENT IS FOR INTERIM REVIEW AND IS NOT INTENDED FOR CONSTRUCTION, BIDDING OR PERMIT PURPOSES.
STEVEN R. HOMEYER, PE # 86942
DATE: 09/23/2021

HOMEYER ENGINEERING, INC.
T.B.P.E. FIRM REGISTRATION NO. F-8440
P.O. BOX 294527 • LEWISVILLE, TEXAS 75029
972-906-9985 PHONE • 972-906-9987 FAX
WWW.HEI.US.COM

BURNS OFFICE
121 RAILROAD ADDITION
LOT 2, BLOCK A
6.58 ACRES
CITY OF LEWISVILLE
DENTON COUNTY, TEXAS

WATER DETAILS

DRAWN: DCU
DATE: 10/06/2020
HEI #: 20-0803
SHEET NO:
C12



NOTE: DETAIL SUBJECT TO CHANGE PER DIRECTION OF CITY OF LEWISVILLE ENGINEERING DIVISION

Engineering Department

Standard Details

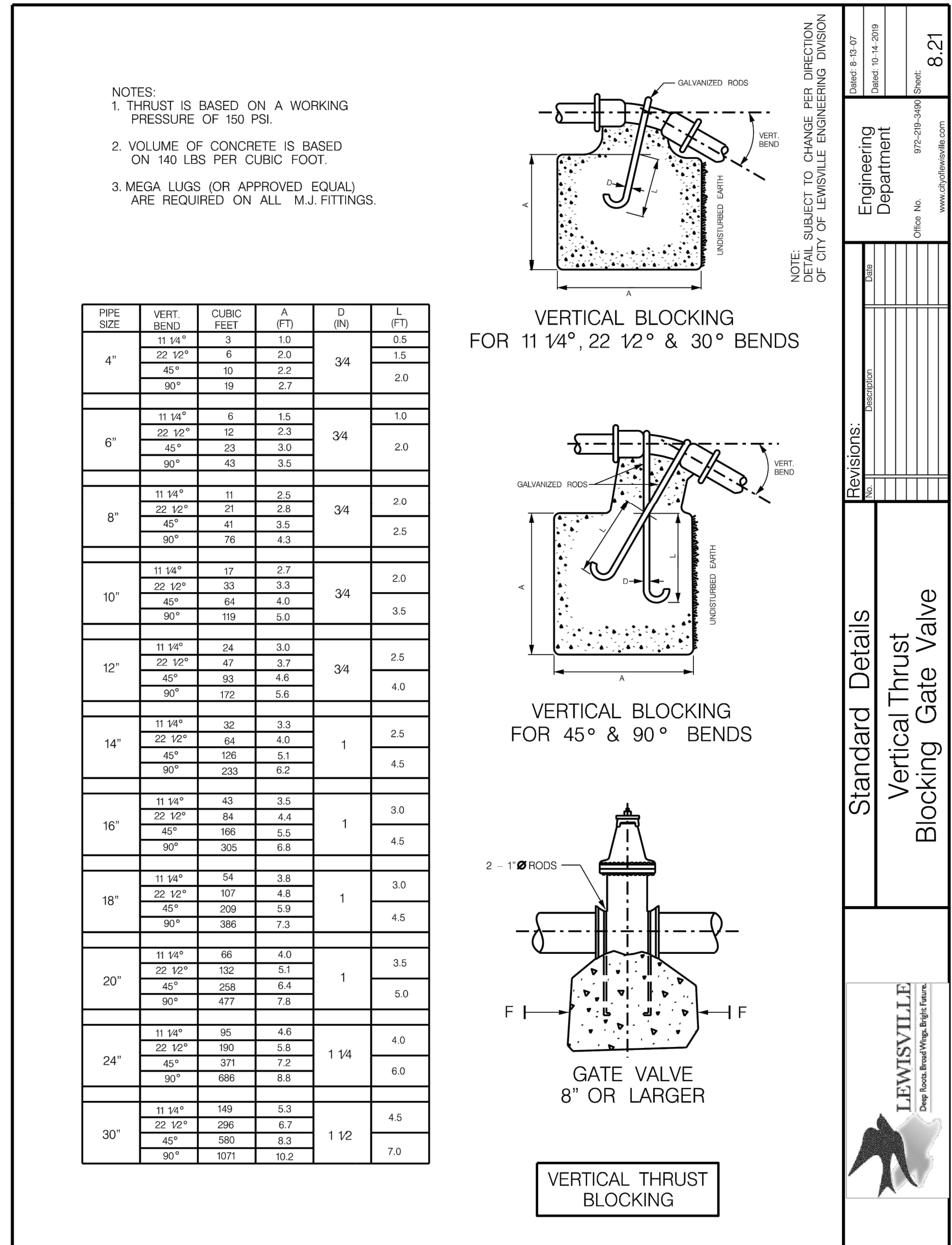
Double Check Detector Check Vault Detail

LEWISVILLE
Deep Roots. Broad Wings. Bright Futures.

Revisions:

No.	Description	Date

Sheet: 8.20



NOTE: DETAIL SUBJECT TO CHANGE PER DIRECTION OF CITY OF LEWISVILLE ENGINEERING DIVISION

Engineering Department

Standard Details

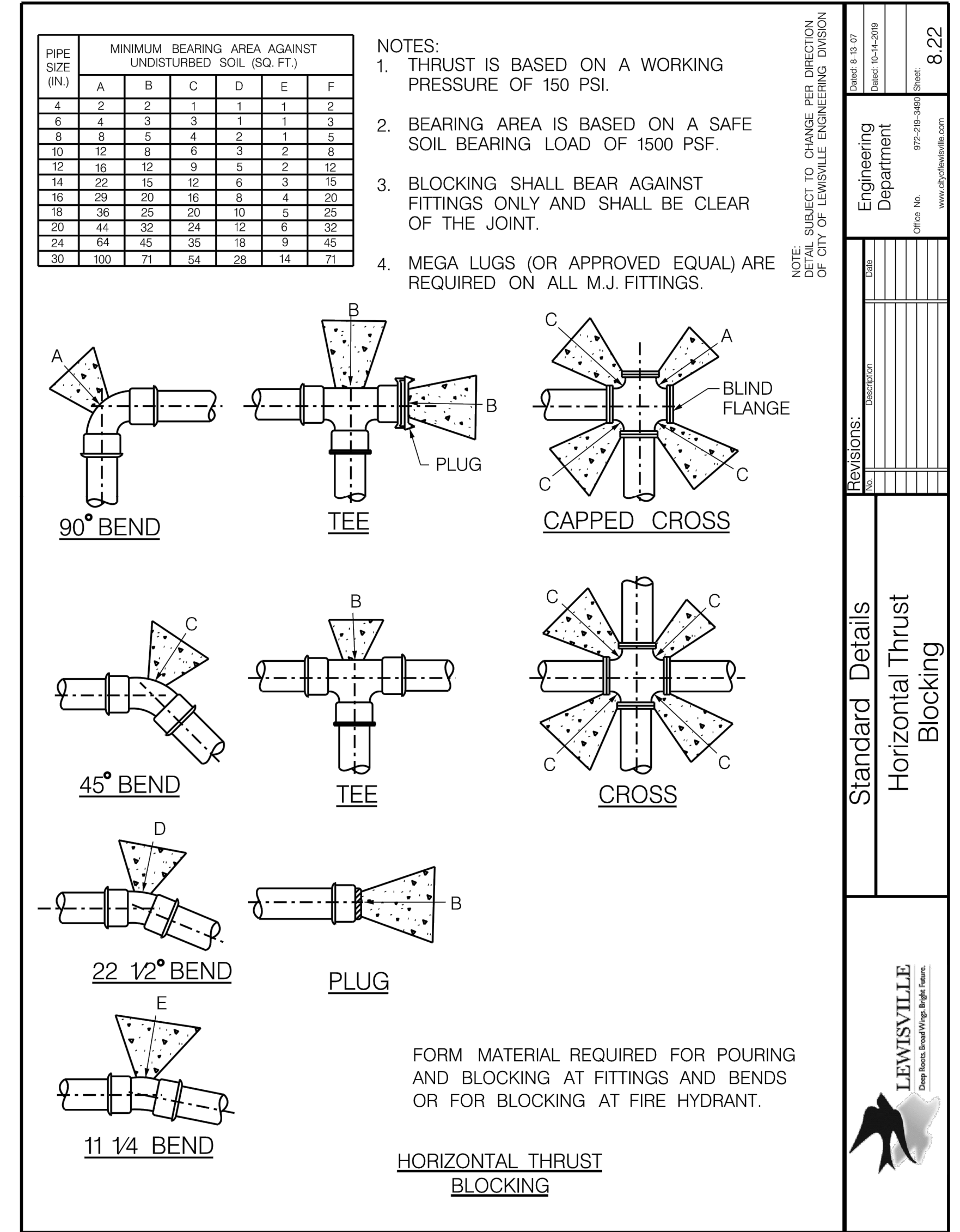
Vertical Thrust Blocking Gate Valve

LEWISVILLE
Deep Roots. Broad Wings. Bright Futures.

Revisions:

No.	Description	Date

Sheet: 8.21



NOTE: DETAIL SUBJECT TO CHANGE PER DIRECTION OF CITY OF LEWISVILLE ENGINEERING DIVISION

Engineering Department

Standard Details

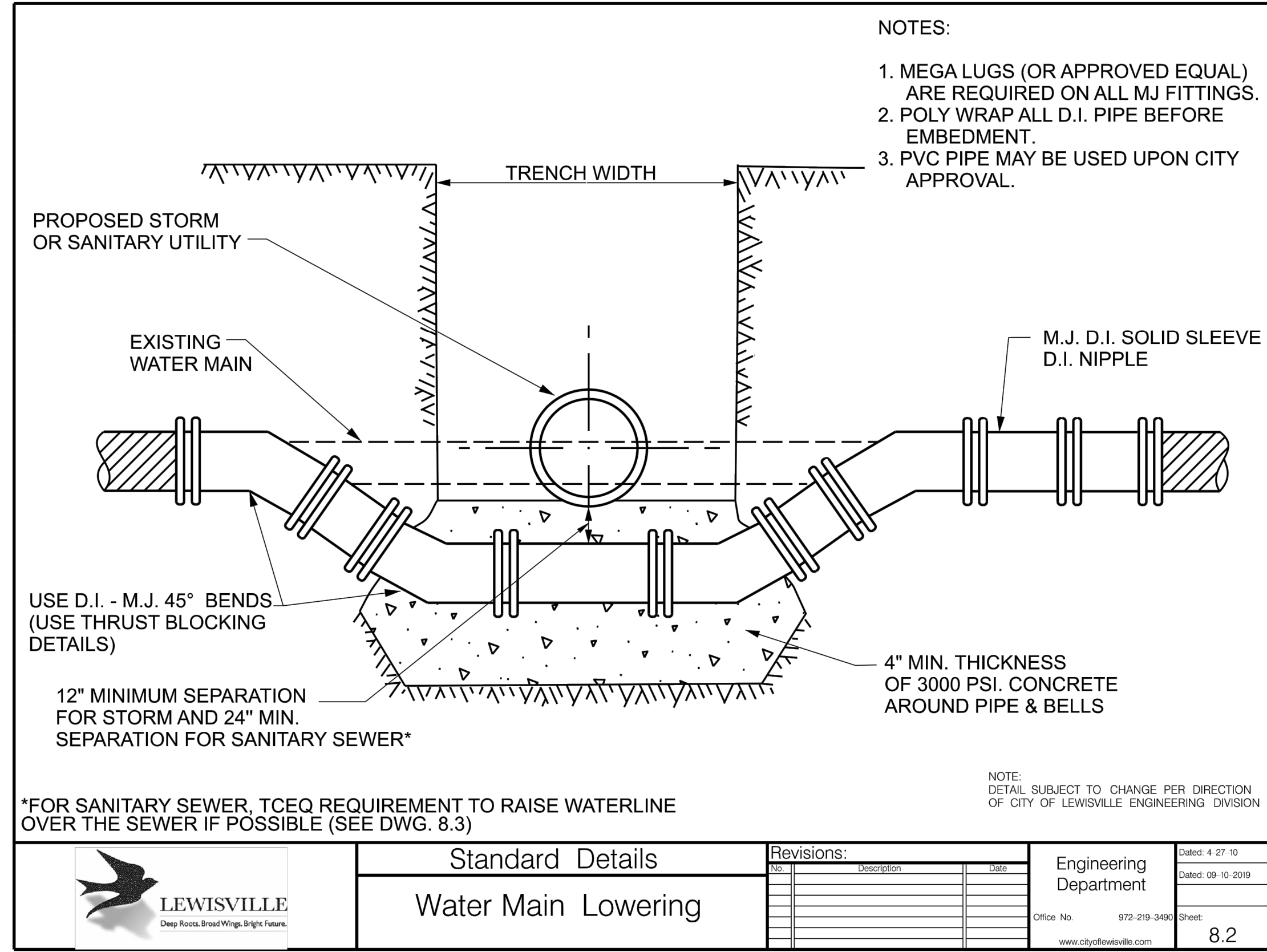
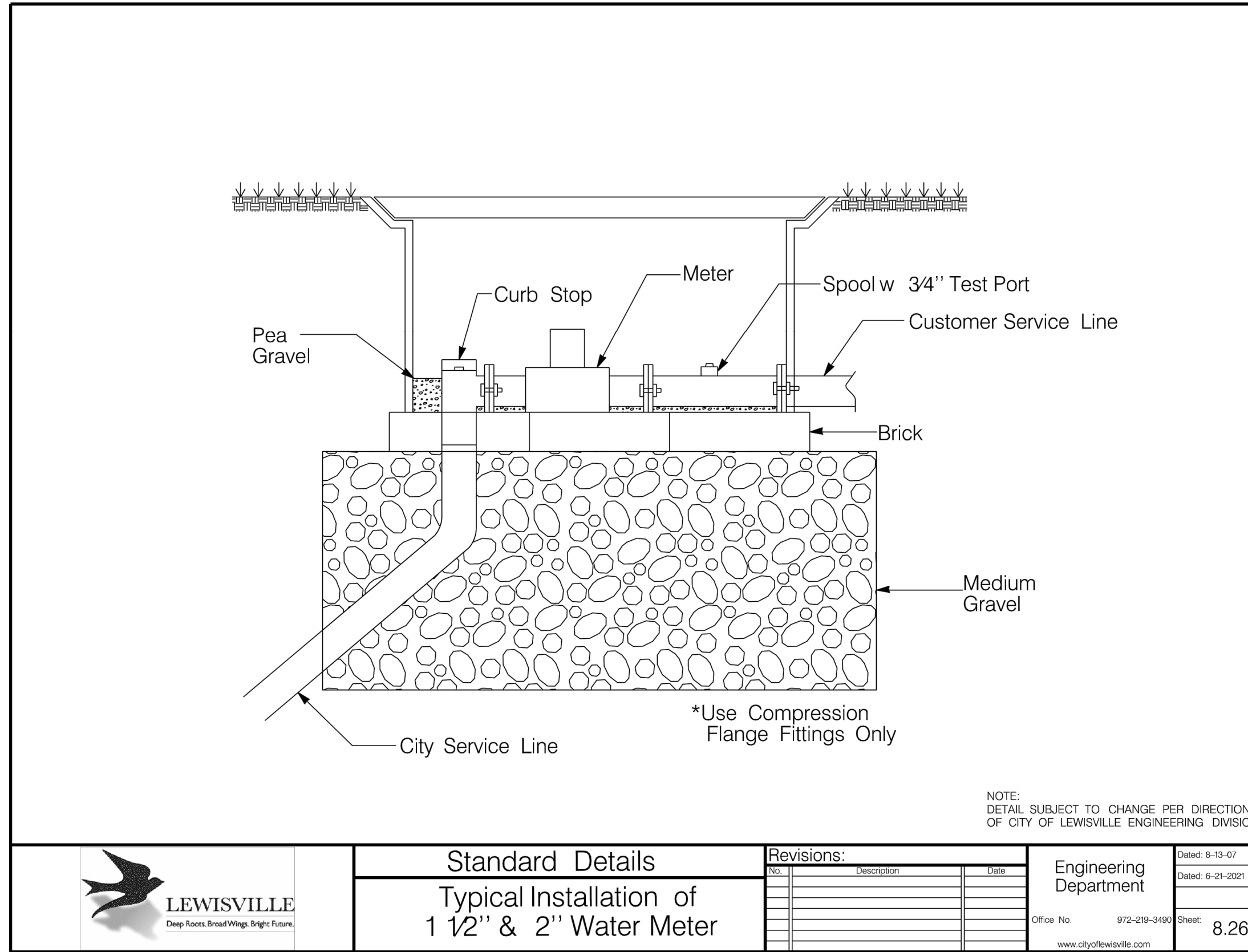
Horizontal Thrust Blocking

LEWISVILLE
Deep Roots. Broad Wings. Bright Futures.

Revisions:

No.	Description	Date

Sheet: 8.22



PRELIMINARY PLANS

THIS DOCUMENT IS FOR INTERIM REVIEW AND IS NOT INTENDED FOR CONSTRUCTION, BIDDING OR PERMIT PURPOSES.

STEVEN R. HOMEYER, PE # 86942

DATE: 09/23/2021

HOMEYER ENGINEERING, INC.

ENGINEERING REGISTRATION NO. F-8440

TBPE FIRM REGISTRATION NO. F-8440

P.O. BOX 294527 • LEWISVILLE, TEXAS • 75029

972-906-9988 • PHONE • 972-906-9987 • FAX

WWW.HEI.US.COM

BURNS OFFICE

121 RAILROAD ADDITION

LOT 2, BLOCK A

6.58 ACRES

CITY OF LEWISVILLE

DENTON COUNTY, TEXAS

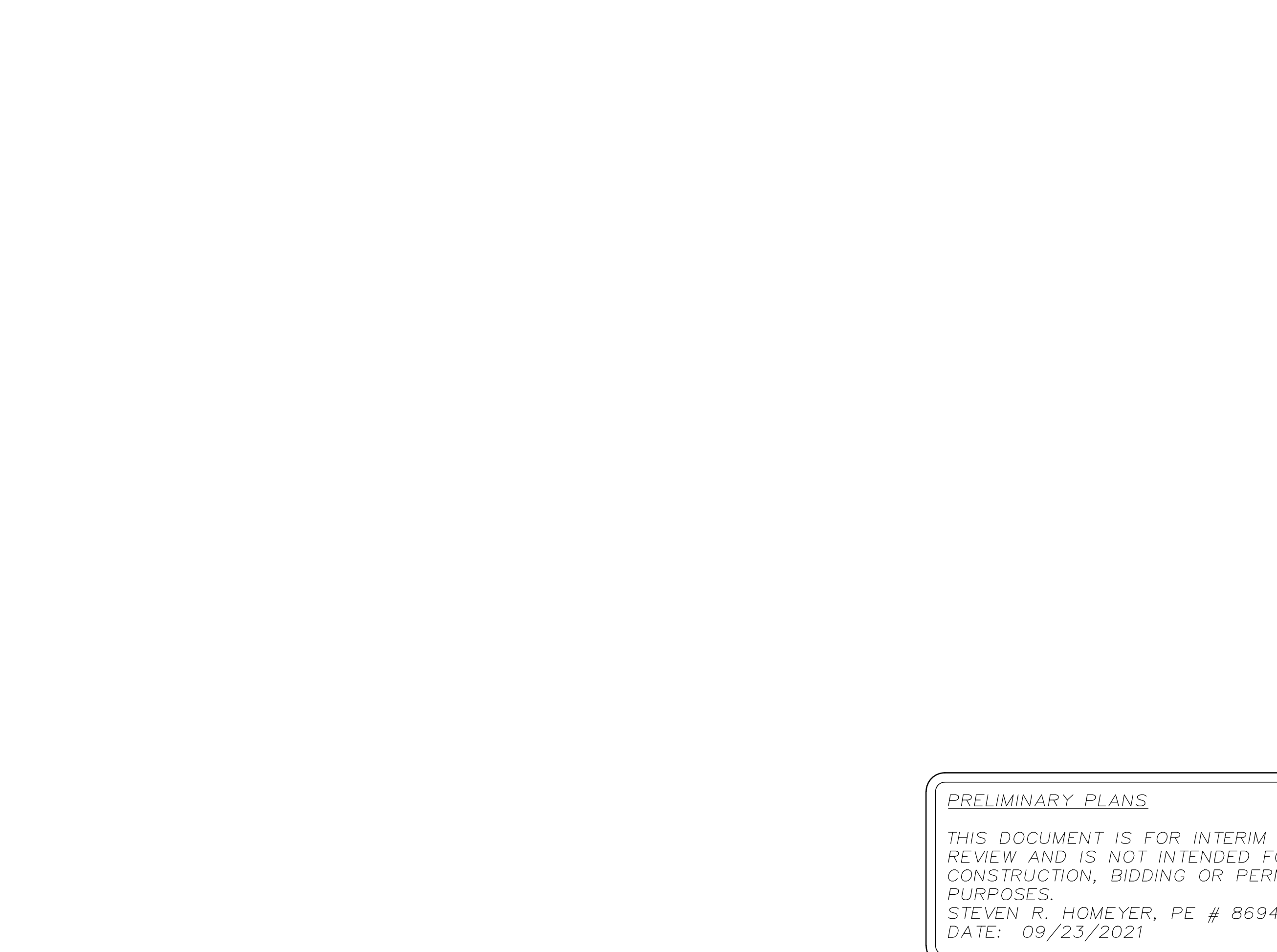
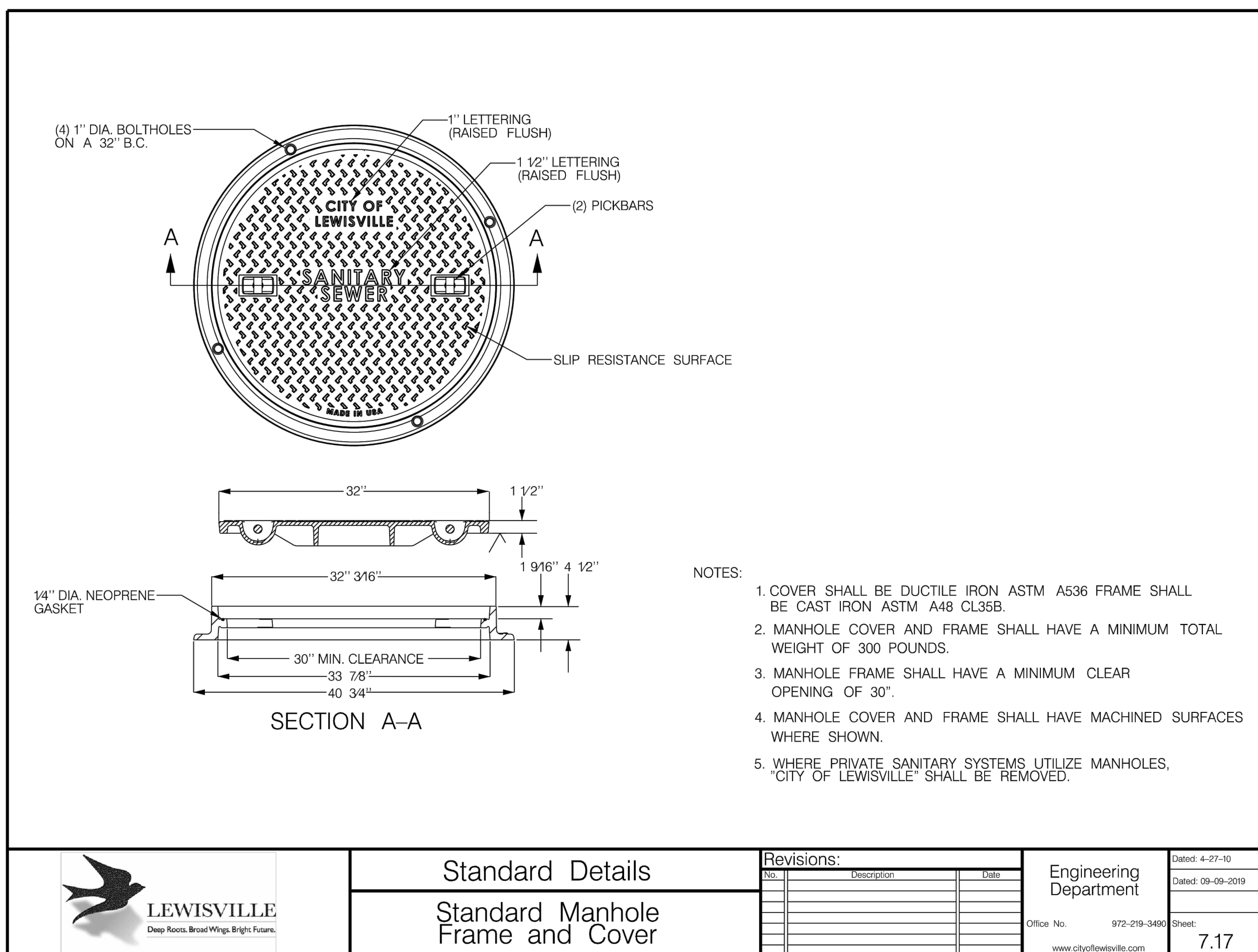
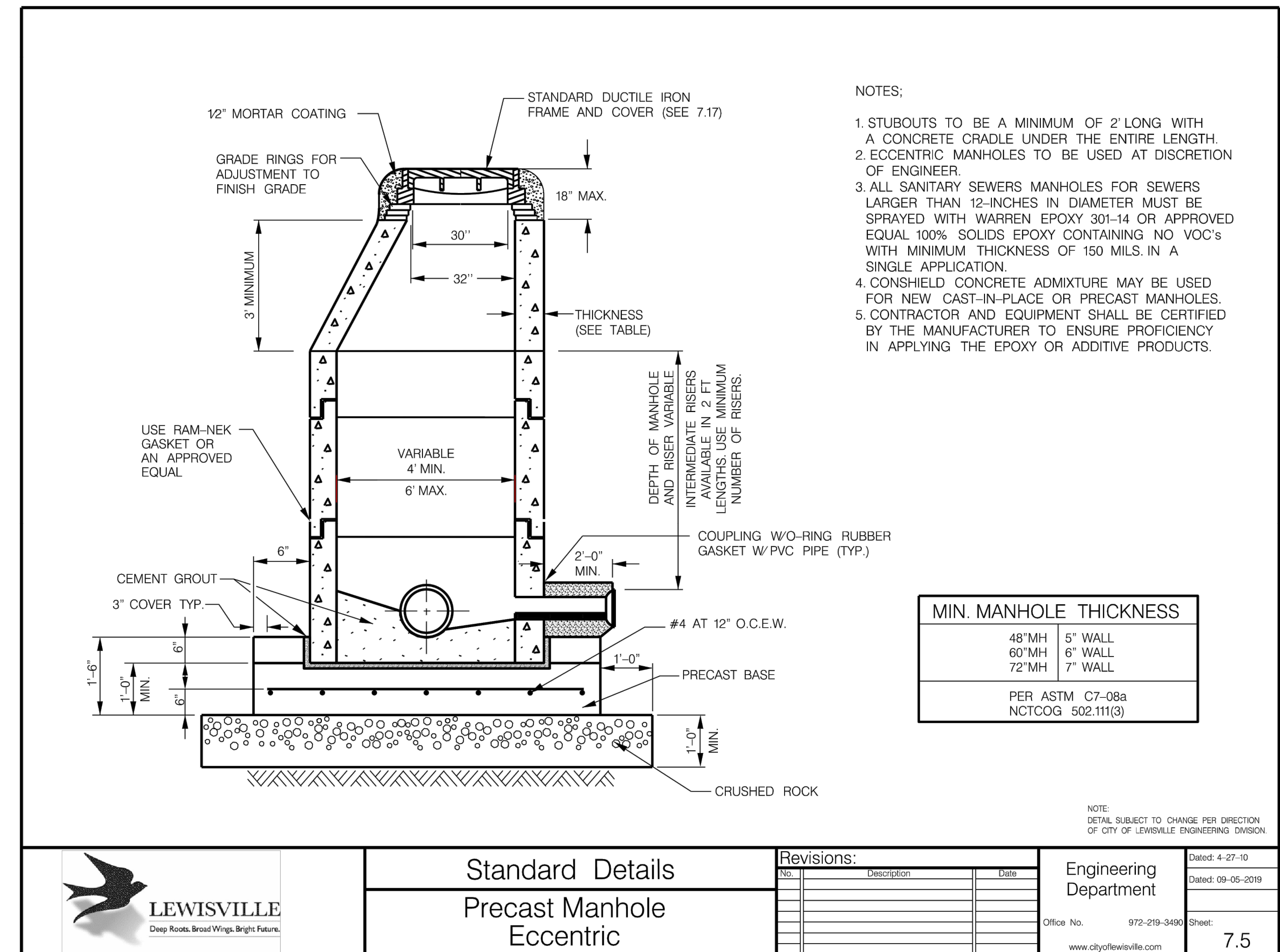
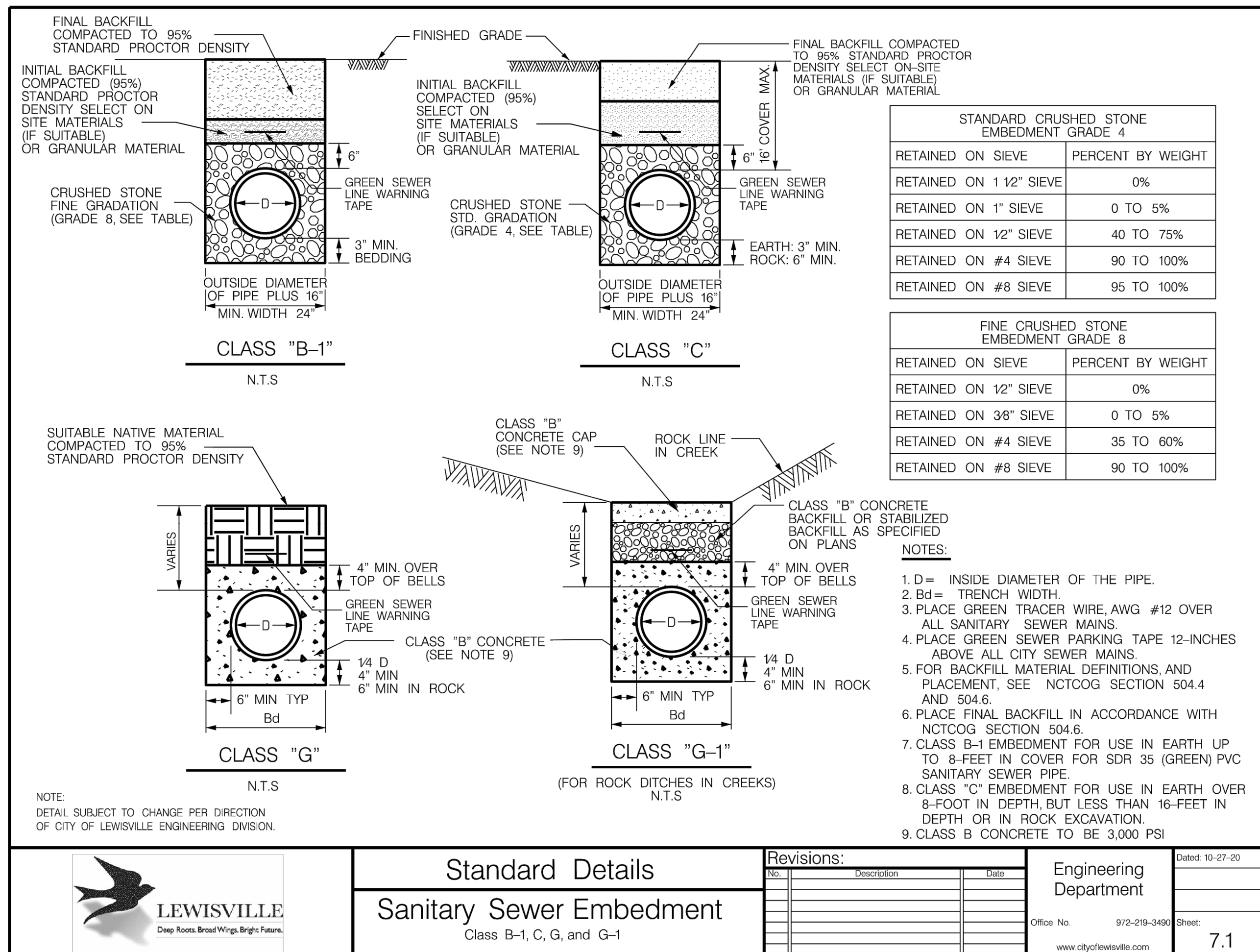
WATER DETAILS

DRAWN: DCU

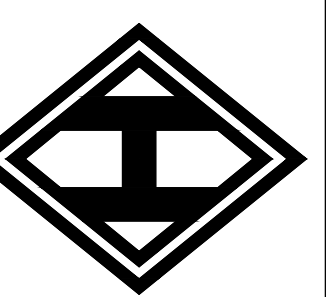
DATE: 10/06/2020

HEI #: 20-0803

SHEET NO: C12.1



HOMEYER ENGINEERING, INC.
 ENGINEERING, INC.
 TBEPE FIRM REGISTRATION NO. F-8440
 P.O. BOX 294527 • LEWISVILLE, TEXAS 75029
 972-906-9986 • PHONE • 972-906-9987 FAX
 WWW.HEI.US.COM



BURNS OFFICE
 121 RAILROAD ADDITION
 LOT 2, BLOCK A
 6.58 ACRES
 CITY OF LEWISVILLE
 DENTON COUNTY, TEXAS

SEWER DETAILS

DRAWN: DCU
 DATE: 10/06/2020
 HEI #: 20-0803
 SHEET NO:
 C13

Standard Details
 Standard Manhole Frame and Cover

No.	Description	Date

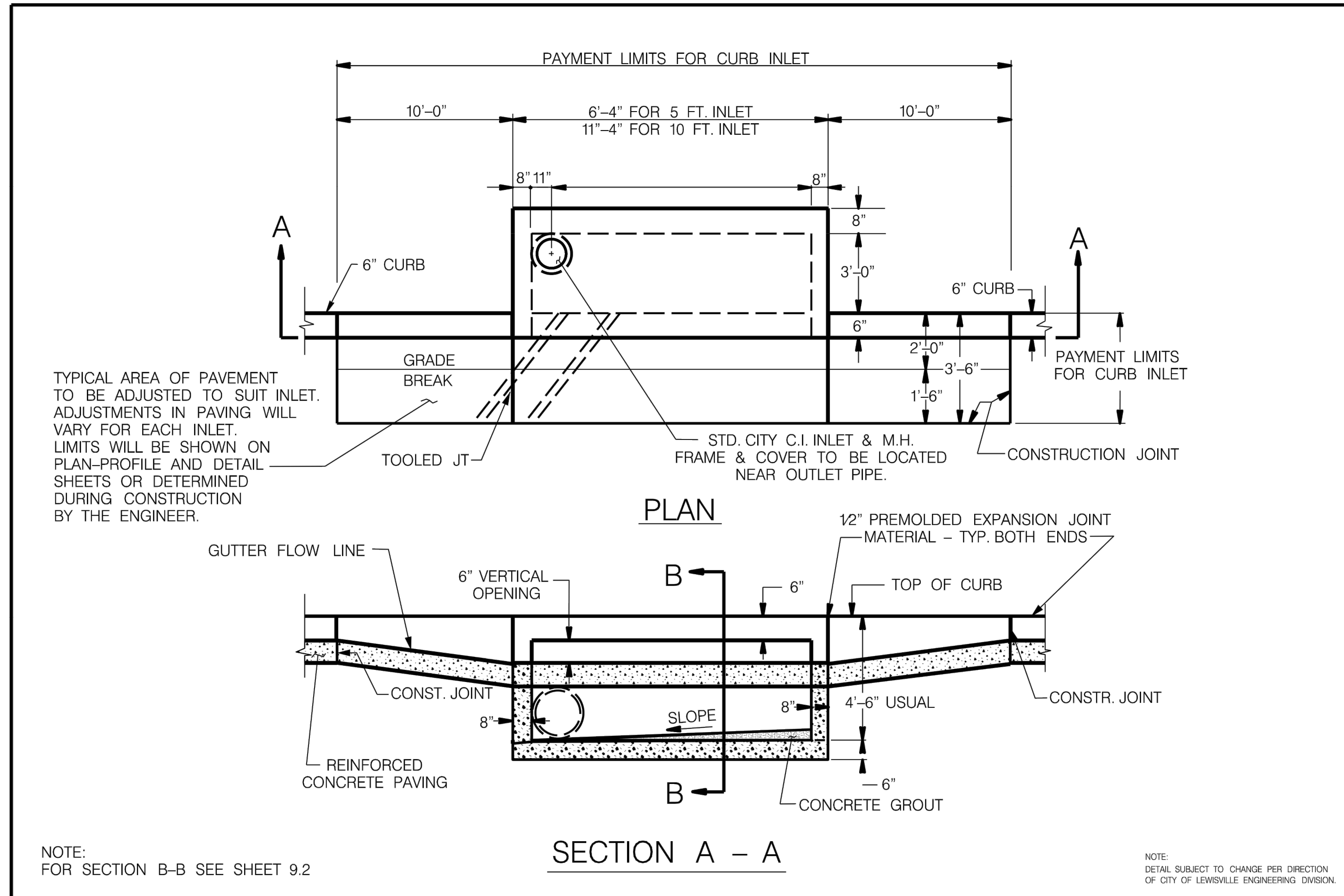
Engineering Department
 Office No. 972-219-3490
 www.cityoflewisville.com
 Sheet: 7.17

Standard Details
 Precast Manhole Eccentric

No.	Description	Date

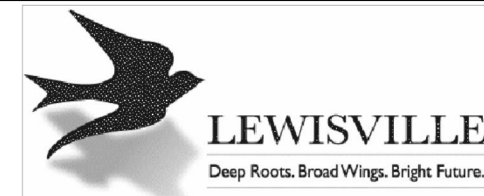
Engineering Department
 Office No. 972-219-3490
 www.cityoflewisville.com
 Sheet: 7.5

PRELIMINARY PLANS
 THIS DOCUMENT IS FOR INTERIM REVIEW AND IS NOT INTENDED FOR CONSTRUCTION, BIDDING OR PERMIT PURPOSES.
 STEVEN R. HOMEYER, PE # 86942
 DATE: 09/23/2021



NOTE:
FOR SECTION B-B SEE SHEET 9.2

NOTE:
DETAIL SUBJECT TO CHANGE PER DIRECTION
OF CITY OF LEWISVILLE ENGINEERING DIVISION.



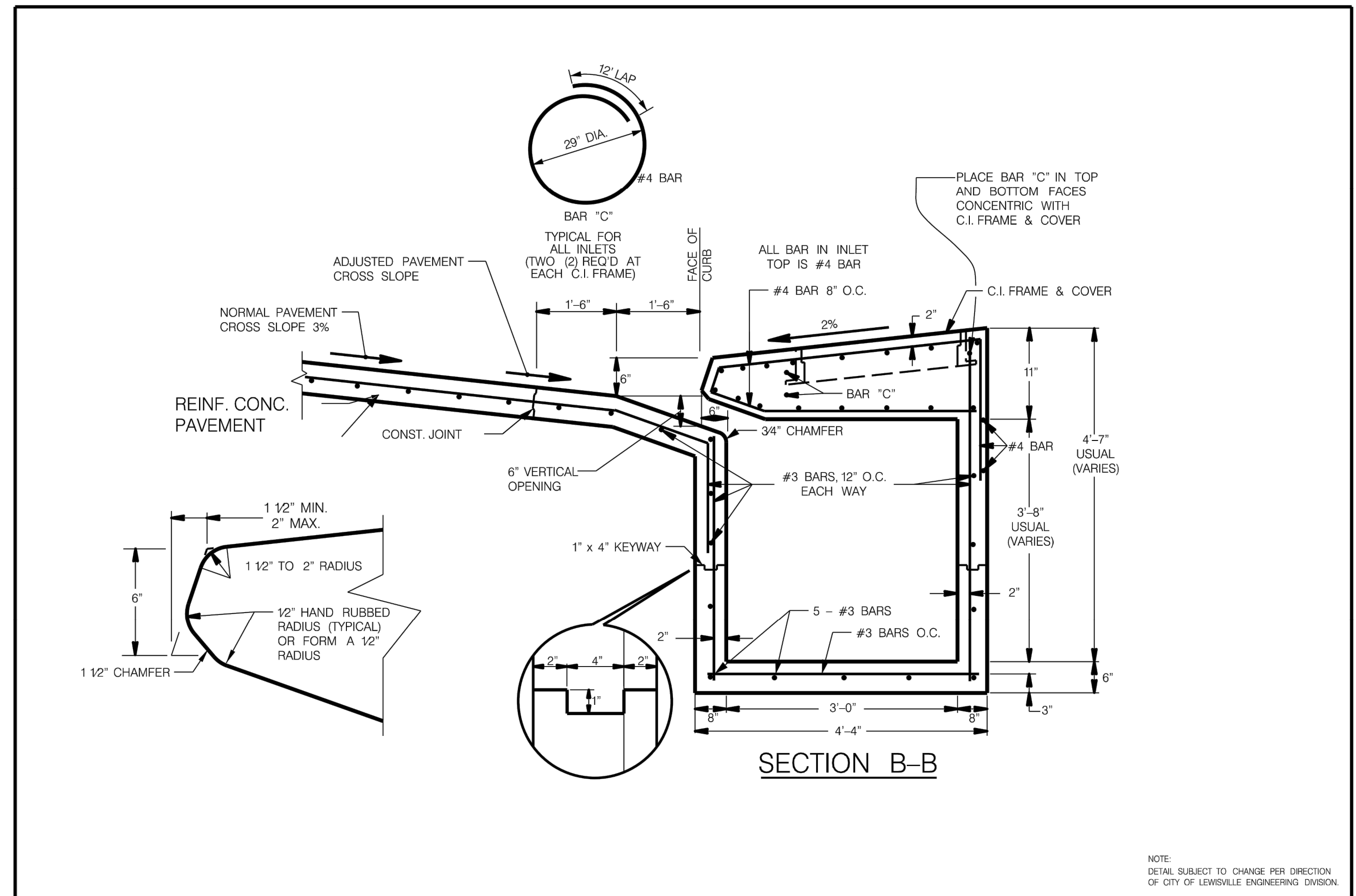
Standard Details
Curb Inlet Detail

Revisions:

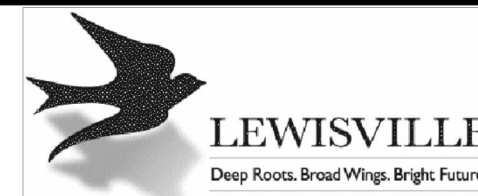
No.	Description	Date

Engineering Department
Office No. 972-219-3490
www.cityoflewisville.com

Dated: 8-13-07
Dated: 10-24-19
Sheet: 9.1



NOTE:
DETAIL SUBJECT TO CHANGE PER DIRECTION
OF CITY OF LEWISVILLE ENGINEERING DIVISION.



Standard Details
Curb Inlet Detail

Revisions:

No.	Description	Date

Engineering Department
Office No. 972-219-3490
www.cityoflewisville.com

Dated: 8-13-07
Dated: 10-24-19
Sheet: 9.2

PRELIMINARY PLANS

THIS DOCUMENT IS FOR INTERIM REVIEW AND IS NOT INTENDED FOR CONSTRUCTION, BIDDING OR PERMIT PURPOSES.
STEVEN R. HOMAYER, PE # 86942
DATE: 09/23/2021

BURNS OFFICE
121 RAILROAD ADDITION
LOT 2, BLOCK A
6.58 ACRES
CITY OF LEWISVILLE
DENTON COUNTY, TEXAS

STORM WATER
DETAILS

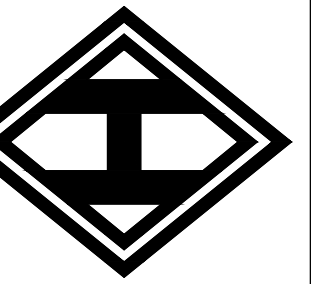
DRAWN: DCU

DATE: 10/06/2020

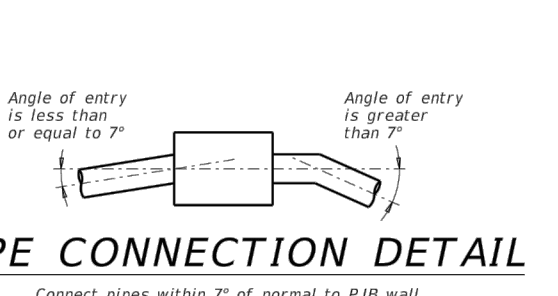
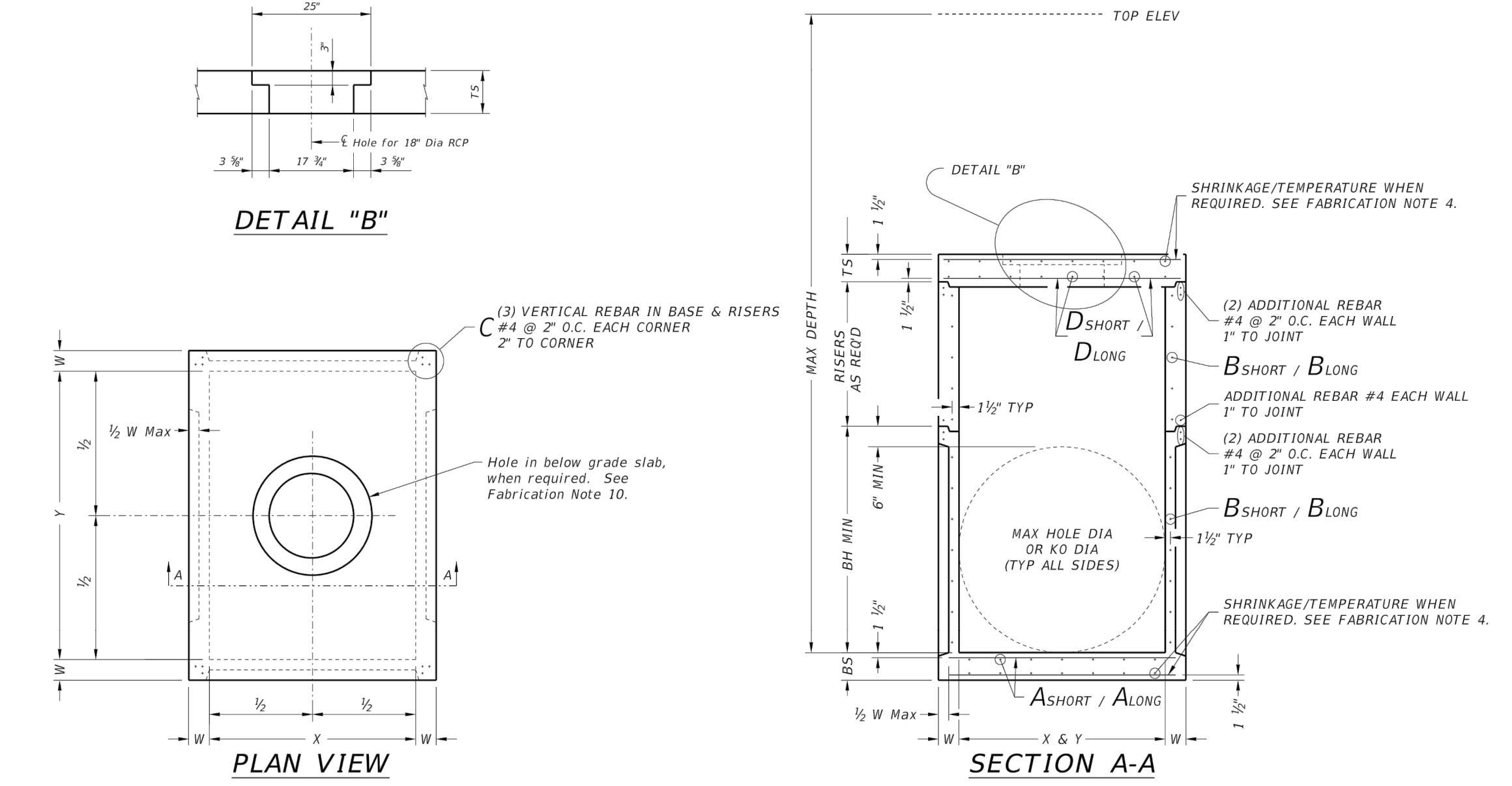
HEI #: 20-0803

SHEET NO:
C14

HOMAYER
ENGINEERING, INC.
TBEPE FIRM REGISTRATION NO. F-84440
P.O. BOX 294527 • LEWISVILLE, TEXAS 75029
972-906-9985 PHONE • 972-906-9987 FAX
WWW.HEI.US.COM



DISCLAIMER:
The use of this standard is governed by the Texas Engineering Practice Act. No warranty is made by the Texas Board of Engineering Examiners or the Board of Professional Engineers as to the accuracy or completeness of this standard or other standards for standards resulting from its use.



- FABRICATION NOTES:**
1. Provide Class "ir" concrete in accordance with Item 421 and having a minimum compressive strength of 5,000 psi.
 2. Provide Grade 60 reinforcing steel or equivalent area of WWR.
 3. Provide typical clear cover of 1 1/2" to reinforcing steel at interior or exterior walls.
 4. Walls or slabs with a thickness of 8" or greater require shrinkage and temperature reinforcing steel. Provide steel area = 0.11 in² width each way.
 5. No substitution is allowed for vertical and horizontal #4 bars in corners.
 6. Manufacture base and risers to nearest 1/8" increment.
 7. Design tongue and groove joints for full closure on both shoulders. Minimum spigot depth is 3/8".
 8. Provide lifting devices in conformance with Manufacturer's recommendations.
 9. See sheet PDD for sizes, dimensions, and reinforcing steel not shown.
 10. Provide hole in below grade slab only when PJB is installed with inlet type PDD.
- INSTALLATION NOTES:**
1. Inverts (benching) to be provided by Contractor. Concrete or mortar used for invert is subsidiary to junction box.
 2. Seal tongue and groove joints with preformed or bulk mastic in conformance with Manufacturer's recommendations. Tongue and groove joints may be grouted no more than 1" between each section, or 1/2 the joint depth, whichever is greater.
 3. Do not graft rubber gasket joints without Manufacturer's recommendation.
 4. For rigid pipe, cut hole in thin wall panel (KO) 4" Max, 2" Min larger than pipe OD.
 5. For flexible pipe, consult manufacturer's specification for placement tolerance and hole size. Center pipe in hole and install bedding per Manufacturer's specification.
- GENERAL NOTES:**
1. Precast Junction Box consists of base slab, base unit, risers (as required), and below grade slab.
 2. See sheet PDD for sizes.
 3. Payment for junction box is per Item 465 "Junction Boxes, Manholes, and Inlets" by type and size.

Cover dimensions are clear dimensions, unless noted otherwise.

HL93 LOADING

Texas Department of Transportation

Bridge Division Standard

PRECAST JUNCTION BOX

PJB

REV	DESCRIPTION	DATE	BY	CHECKED	DATE
1	ISSUE	JANUARY 2015			
2	REVISED				

DATE: _____
FILE: _____

HOMMEYER ENGINEERING, INC.
ENGINEERING, INC.
T.B.P.E. FIRM REGISTRATION NO. F-84440
P.O. BOX 294527 • LEWISVILLE, TEXAS • 75029
972-906-9985 • PHONE • 972-906-9987 • FAX
WWW.HEI.US.COM

BURNS OFFICE
121 RAILROAD ADDITION
LOT 2, BLOCK A
6.58 ACRES
CITY OF LEWISVILLE
DENTON COUNTY, TEXAS

STORM WATER
DETAILS

Size	MAX DEPTH = 15 ft. to top of BASE SLAB															MAX DEPTH = 25 ft. to top of BASE SLAB														
	Base Slab					Base Unit or Riser Walls					Below Grade Slab (w/PJB) Reducing Slab (w/PB)					Base Slab					Base Unit or Riser Walls					Below Grade Slab (w/PJB) Reducing Slab (w/PB)				
	Short Span Area	Long Span Area	Thickness	Short Span Area	Long Span Area	Thickness	Short Span Area	Long Span Area	Thickness	Reduced Riser Size	Short Span Area	Long Span Area	Thickness	Short Span Area	Long Span Area	Thickness	Short Span Area	Long Span Area	Thickness	Reduced Riser Size	Short Span Area	Long Span Area	Thickness	Short Span Area	Long Span Area	Thickness	Short Span Area	Long Span Area	Thickness	
X x Y	Ashort	Along	B5	Bshort	Blong	W	RWS/RWL or ID	Dshort	Dlong	TS	Ashort	Along	B5	Bshort	Blong	W	RWS/RWL or ID	Dshort	Dlong	TS	BH MIN	HOLE DIA	KO DIA							
ft.	in./ft	in./ft	in.	in./ft	in./ft	in.	ft./ft	in./ft	in./ft	in.	ft./ft	in./ft	in.	ft./ft	in./ft	in.	ft./ft	in./ft	in./ft	in.	ft.	in.	in.							
3x3	0.23	0.23	6	0.19	0.19	6	N/A	0.37	0.37	9	0.29	0.29	6	0.24	0.24	6	N/A	0.41	0.41	9	4.5	48	48							

** Unless otherwise indicated.

- FABRICATION NOTES:**
1. Maximum spacing of reinforcement is 8".
 2. At manufacturer's option, provide cast or cored holes or thin wall panels (KO) to the maximum diameter shown for each. When no penetration is required, it is acceptable to provide a wall with no sectional reduction.
- GENERAL NOTES:**
1. Precast Junction Box consists of base slab, base unit, risers (as required), and below grade slab. See sheet PJB for details.
 2. Precast Base consists of base slab, base unit, risers (as required), reducing slab (as required), and reduced risers (as required). See sheet PB for details.
 3. Min height shown is for stock base units. Use stock base units whenever practical. Smaller height base units can be used in special installation circumstances, when noted elsewhere in the plans. Absolute minimum height of base units is 2'-0".

HL93 LOADING

Texas Department of Transportation

Bridge Division Standard

DESIGN DATA FOR PRECAST BASE AND JUNCTION BOX

PDD

REV	DESCRIPTION	DATE	BY	CHECKED	DATE
1	ISSUE	JANUARY 2015			
2	REVISED				

PRELIMINARY PLANS

THIS DOCUMENT IS FOR INTERIM REVIEW AND IS NOT INTENDED FOR CONSTRUCTION, BIDDING OR PERMIT PURPOSES.
STEVEN R. HOMMEYER, PE # 86942
DATE: 09/23/2021

DRAWN: DCU

DATE: 10/06/2020

HEI #: 20-0803

SHEET NO:
C14.1