



THE UNDERGROUND

Newsletter

2023

In This Issue

Safety & Quality
#WOMANUP Program
Project Highlights
Philanthropy
Top Workplace Award
Employment Anniversaries
Headquarters



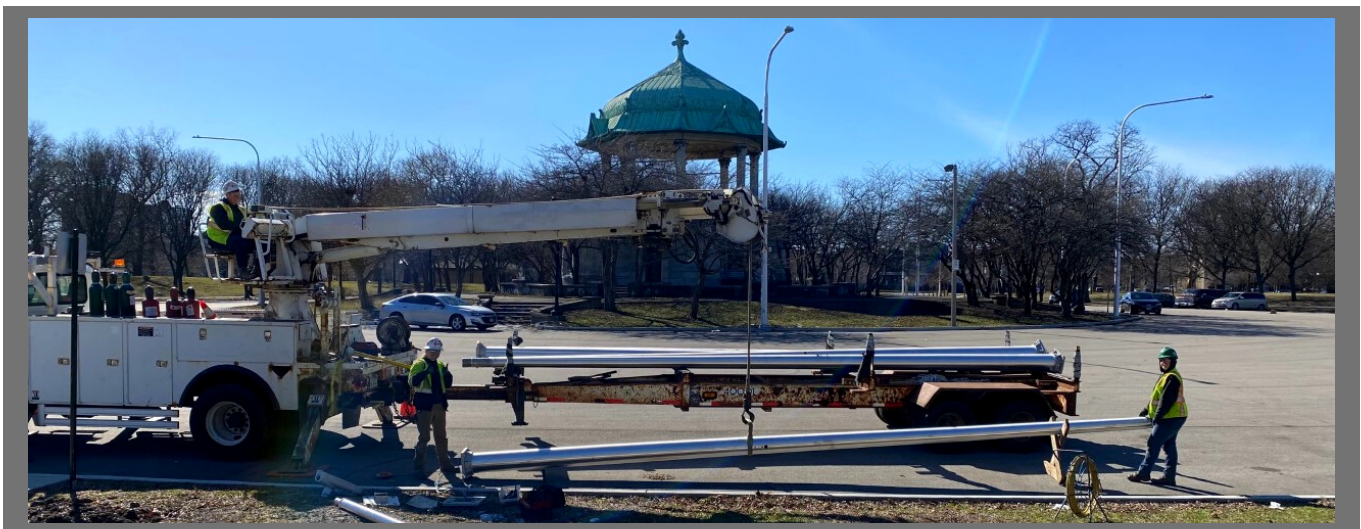
Safety & Quality

Safety

Over the past year John Burns has continued to find innovative ways to improve our safety program. This included two new additions to the safety team who have experience in the complex work environments that our field crews work in every day. Jim Norton was hired as a Safety Engineer/Utility Locator. Jim has over 15 years' experience in underground construction having worked on a directional bore crew and as a utility locator. Jim has been an enormous asset to the company verifying utility locates and making sure the job site is safe for our crews to dig. Bob Iannello was also hired in 2021 as a Safety Engineer on our CTA projects. Bob worked for the CTA for over 30 years before retiring last November. Since joining John Burns Bob has been a constant presence on our CTA projects using his vast experience to ensure our crews stay safe while working on the tracks. Adding these two subject matter experts has allowed John Burns to continue to be a Safety leader in the construction industry.

Quality

The past year, several improvements were made to our Quality Department processes. First, all new hires are now trained on the JB Quality Program for uniformity in our systems. Second, at the time of preconstruction, a quality kickoff event is performed to review all contract and quality requirements, past lessons learned, and risks and opportunities. Third, our quality assurance team members visit each active job site to perform process audits and quality control audits to ensure contract requirements are met. Lastly, all major projects are completed with a post-audit to review what improvements can be made on future similar projects within our organization.



#WOMANUP Program

John Burns' #WOMANUP Program connects female team members by providing trainings, networking opportunities, and events. This program serves to empower female team members in a male dominated industry by building relationships with one another and preparing them for leadership positions within the organization.

"Over the past 20 years in the Construction industry, I've had the opportunity to continuously pave the way for the future of women in the industry. I strive daily to make my impact a positive one not only for JB but for Women in Construction." ~Carrie Peel, JB Senior Project Manager (IL)

"Currently women make up only 10% of the construction workforce in the US. I'm proud to work for a company where females make up 31% of the current workforce; many of them in leadership positions throughout the company. JB is doing a fantastic job opening doors for women in construction!" ~ Tara Szwabowski, JB Accounting Supervisor (IL)

BUILDING LEADERS IN THE INDUSTRY



CTA Barry, Damen, Canal Substations & Belmont Crossover

John Burns was awarded a \$68.5M contract as the prime contractor for work on the Damen Substation, Canal Tie-House, Barry Substation, Haymarket Station, and Belmont Crossover in Chicago, IL.

Project Overview:

- Damen Station: New substation construction. New rectifiers, transformers, AC & DC gear, SCADA, aerial conduits/cable to elevated structure to switches/3rd rail
- Canal Tie-House: Construction of pre-fabricated tie breaker house in subway connector tunnel, new DC gear, SCADA, 650' of ductbank and associated cable pulling with risers to elevated tracks, and 350' of conduit attached to elevated tracks
- Barry Substation: New substation construction. New rectifiers, transformers, AC & DC gear, SCADA, ductbanks to each air shaft down into subway, ductbanks/cable pulling in subway to tie into switches, 3rd rail, etc.
- Haymarket Substation: Replacement of existing transformers, rectifiers, AC & DC gear, and SCADA
- Belmont Crossover: Replacement of existing Belmont Crossover & approach track. Demo existing traction power ductbanks & replace. Replace existing signal infrastructure

Project Team:

- Kent Busse (Senior PM)
- Jeff Dore (Senior Construction Manager)
- Mark Santucci (Project Manager)
- Carle Wunderlich (Superintendent)
- Donovan Hays (APM), Alexx Nauman (APM)
- Pat Brucki (APM), Tom Fritz (APM)



Metra Peterson Ridge

John Burns was awarded a \$15M contract for the Metra Peterson Ridge Train Station. This work includes ramps, stairs, wind shelters, and site improvements.

Project Overview:

- Four switchback concrete ramps and stairs north of Peterson
- Two standalone stairs S of Peterson
- Masonry warming house
- Two wind shelters
- Site improvements including bridge rehab/column repairs and waterproofing during weekend outages

Project Team:

- Husam Arabi (Project Manager)
- Steve Volz (Construction Manager)
- Vinny White & Ethan Lang (Foremen)
- Martin Vega (Superintendent)
- Adam Dorociak (Structural Concrete Oversight)
- Tom Dzielski (APM)



Jackson Park Mobility

John Burns was awarded a \$22.5M contract to work as the Electrical Subcontractor alongside FH Paschen for the Jackson Park Mobility project.

Project Overview:

- Replacing roadway lighting, traffic signals, pedestrian underpass lighting, pedestrian pathway lighting, waterway lighting, and trans closures on Lake Shore Drive, Stony Island Ave, and surrounding Jackson Park area in preparation for Obama Presidential Center
- Responsible for widening Lake Shore Drive to three lanes southbound from 57th, expanding two additional existing pedestrian tunnels, building three new pedestrian tunnels, as well as pedestrian walkways, and general utility improvements

Project Team:

- Jay Petty (Project Manager)
- Ian Higgins (Construction Manager)
- Kevin Krause (Superintendent)
- Anikia Tillery (Project Coordinator)



North End Improvements Project

John Burns was awarded the Installation of 1,900' of Electrical Duct bank and Electrical Manholes in Dallas, Texas.

Project Overview:

The North End Improvements project is a multidiscipline project consisting of electrical, wastewater, and stormwater utilities located near downtown Dallas, Texas. The electrical portion of the project involves installation of 1,900' of 4E6, 8E6 & 15E6 duct bank packages along with connections to existing electrical manholes and installation of single and double stack electrical manholes. The duct bank routes around the perimeter of a 12 acre development along major throughfares leading to downtown Dallas. The challenges of this project are the installation of the proposed duct bank at approximately 15' deep with countless existing known and unknown utilities along the path. Strong traffic control was also very important given the amount of daily traffic in the area.

Installation Of a Double Stack Manhole



Installation of 8E6/4E6/ & 15E6 Duct Bank



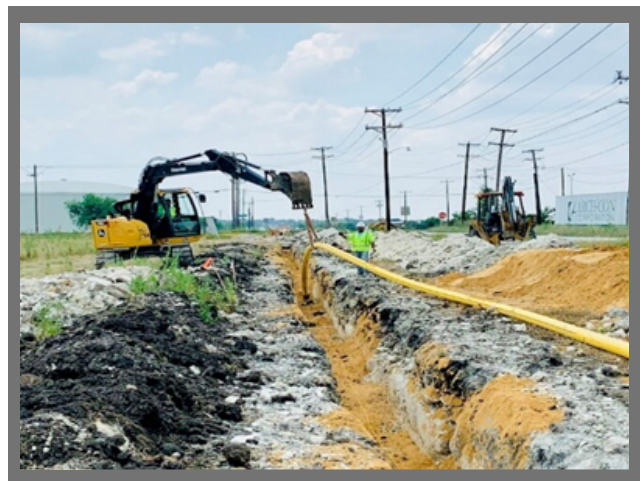
Wintergreen Gas Project

John Burns was awarded the Installation of 6000' of 6" HDPE gas main in Lancaster, Texas.

Project Overview:

This project is a gas main extension located in Lancaster, Texas. The project consists of 6000' of 6" HDPE to be installed 42" deep, cushioned with sand and backfilled with dirt. Then, tamped to ensure proper density levels are met allowing for a settlement free final grade. The installation data is electronically mapped and kept using our Locus-View mapping system to provide accurate existing installed location and fitting specifications to Atmos Energy, our client. The challenges of this project are excavating in challenging rock while moving spoils off site and transferring backfill material on site.

Open Cut Trench Excavation



Poly-fusion



Philanthropy

JB Giving Committee: Tara Szwabowski, Ian Higgins, Nick Syska, Carrie Peel, Alex Kitchie, Donovan Hays, and Stephany Wojtczak

Highlights

Events (2022)

- John Burns' Annual Charity Shoot Out raised \$125,000 to be spread across nine charity partners
- JB Giving Partners:
 - Erie House
 - Chicago Commons
 - Convoy of Hope
 - AFSP
 - Lifescape
 - March of Dime's
 - Sarah's Circle
 - Ignite
 - SEED Foundation



John Burns has been awarded a Top Workplaces 2022 honor by Chicago Tribune Top Workplaces. The list is based solely on employee feedback gathered through a third-party survey administered by employee engagement technology partner Energage LLC. The confidential survey uniquely measures 15 culture drivers that are critical to the success of any organization: including alignment, execution, and connection, just to name a few.

Employment Anniversaries

15 YEARS:

- Eric Probst, Program Manager
- Ian Higgins, Construction Manager
- Nicole Posluszny, Foreman
- Luis Sianez, Foreman

10 YEARS:

- Eileen Esposito, Executive Assistant
- Sarah Bettenhausen, Quality Manager
- Brian Manczko, Foreman
- Dan Verble, Construction Manager

5 YEARS:

- Brett Ditchman, Estimator
- Kam Jarmon, Yard Manager
- Nick Syska, Business Development
- Kevin Koran, Director
- Brian Riggs, Foreman
- Cesar Sanchez, Journeyman

CONGRATULATIONS TO YOU ALL, AND THANK YOU FOR
YOUR DEDICATION AND DEPENDABILITY!

JBCC Headquarters



Illinois Headquarters
999 Oakmont Plaze Drive
Westmont, IL 60559
Main # 708-326-3500



Downtown Chicago Office
1750 W. Fulton St.
Chicago, IL 60612
Main # 312-888-2388



Texas Headquarters
655 East Main Street
P.O. Box 1117
Lewisville, TX 75057
Main # 972-434-6789
Fax # 972-221-8301

JOHN BURNS

Connecting People and Improving their Lives Since 1906!